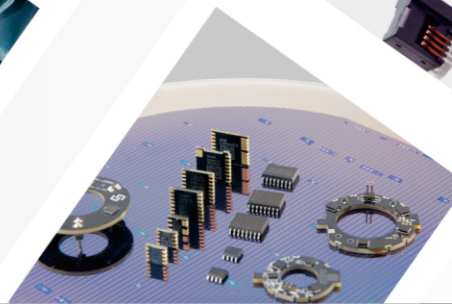


# ***SINOMAGS***

## CURRENT SENSOR

### Application

### 电流传感器 应用



作为领先的磁性传感器行业IDM公司，希磁科技是全球少数拥有完整磁传感技术组合及跨整个行业价值链全面垂直整合的公司之一。这使希磁建立了涵盖霍尔效应技术及AMR, GMR, TMR等全系列xMR技术的全路径技术组合，该技术组合为我们提供了广泛的磁性传感器解决方案，主要包括多种规格与特性的电流传感器及运动检测传感器。

As a leading IDM (Integrated Device Manufacturer) in the magnetic sensor industry, Sinomags Technology is one of the few globally capable companies possessing a complete magnetic sensing technology portfolio and comprehensive vertical integration across the entire industry value chain.

This enables Sinomags to establish an all-path technology portfolio encompassing Hall Effect technology and the full range of xMR technologies (including AMR, GMR, and TMR).

This comprehensive portfolio provides us with a wide array of magnetic sensor solutions, primarily including current sensors and motion detection sensors with diverse specifications and characteristics.

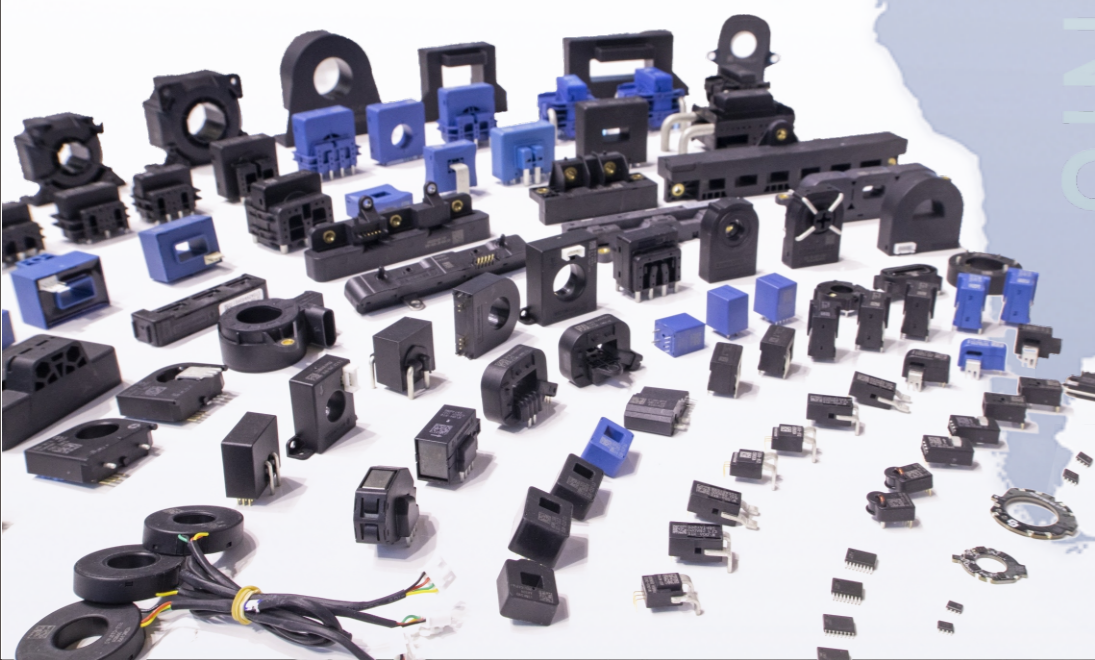
希磁科技成立于2013年，IDM业务布局全球，包括德国的先进晶圆制造及中国的全面运营。希磁产品主要包括多种规格与特性的电流传感器及运动检测传感器（包括中空绝对式角度磁编码器、线性位移磁编码器、磁图像识别传感器、磁性传感器芯片、磁性开关芯片等）。凭借这一全面的产品组合，我们的产品已服务于绿色能源、新能源车及汽车、工业自动化及机器人等多个下游领域。






Sinomags Technology, founded in 2013, operates its IDM (Integrated Device Manufacturer) business globally, encompassing advanced wafer manufacturing in Germany and comprehensive operations in China.

Our product portfolio primarily includes current sensors and motion detection sensors featuring diverse specifications and characteristics, such as: Hollow-shaft absolute angle magnetic encoders, Linear displacement magnetic encoders, Magnetic image recognition sensors, Magnetic sensor chips, Magnetic switch chips.

This comprehensive portfolio has been deployed across multiple downstream sectors, including: Green energy, New energy vehicles & automotive, Industrial automation Robotics.

SINOMAGS CURRENT SENSORS



- 
**Bengbu (Sinomags)**  
 Headquater  
 Production for Current Sensor
- 
**Wuxi (Lertech & Esstmags)**  
 R&D  
 Sales Centers
- 
**Ningbo (Sinomags)**  
 R&D & Production for Current Sensor
- 
**Mainz (SENSITEC)**  
 Waferfab for magnetic sensor
- 
**Wetzlar (SENSITEC)**  
 R&D Center for magnetic sensor

# CONTENTS

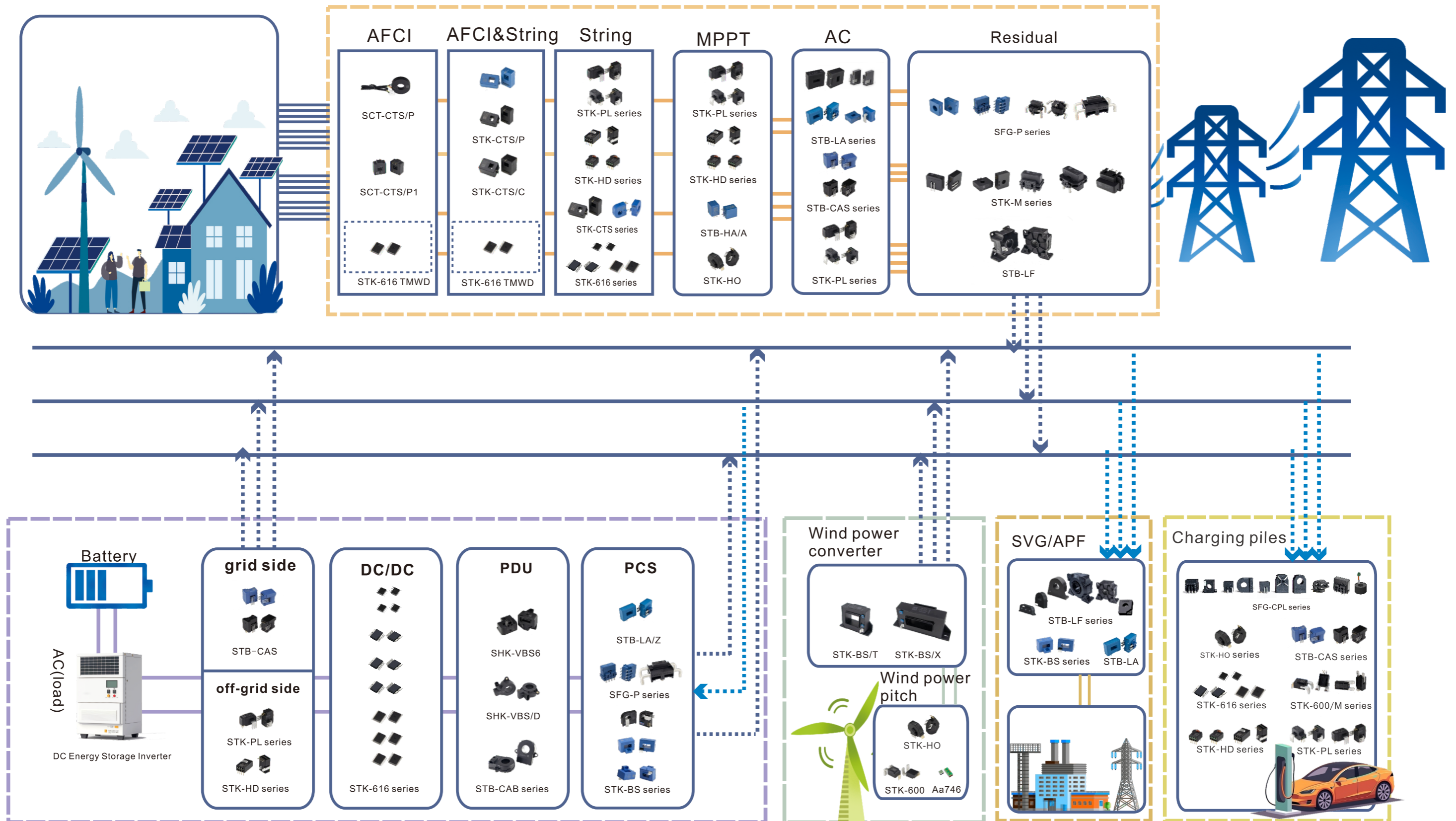
## 目录

- 01** NEW ENERGY APPLICATION  
新能源发电应用 03-12
- 02** EV APPLICATION  
车载应用 13-17
- 03** DRIVE APPLICATION  
驱动应用 18-22

- 04** UPS APPLICATION  
不间断电源应用 23-27
- 05** HFCT APPLICATION  
高频应用 28-31

- 06** CORELESS SOLUTION  
无磁芯方案 32-36
- 07** CHARGING PILS APPLICATION  
充电桩应用 37-40

# NEW ENERGY GENERATION APPLICATION



# 01

## NEW ENERGY APPLICATION

- Meet the requirements for high pressure and high altitude
- Meet the requirements for high frequency
- Development based on underlying application requirements

### ◎ AFCI

Product	Out						ESD rating(HBM)	Application
	Current	Voltage	Self-inspection Inductance(μH)	Induction coil Inductance(μH)	Self-inspection Resistance(Ω)	Induction coil Resistance(Ω)		
SCT-CTS/P1	○		NA	400 ~ 500	NA	0.4 ~ 1	4	AFCI
SCT-CTS/P	○		135 ~ 205	530 ~ 580	0.4 ~ 1	0.8 ~ 2	4	

### ◎ AFCI & String

Technology	Type	Out	Vcc (V)	I <sub>pn</sub> (A)	I <sub>pm</sub> (A)	U <sub>ESD</sub> (kV)	U <sub>d</sub> (kV)	BW (kHz)	t <sub>r</sub> (μs)	X@IPN TA=25°C (%FS)	X <sub>TRange</sub> (%FS)	Connction	Application
○	STK-CTS/C1	○	5	12.8 ~ 16	32 ~ 40	4	4	400	1	1	2 ~ 3	THT	AFCI&String
○	STK-CTS/P	○	5	12.8 ~ 20	20 ~ 50	4	4	400	1	1	2.5	THT	
○	STK-CTS/P5	○	5	10 ~ 20	25 ~ 50	4	4	400	1	0.8	1.5 ~ 3	THT	
○	STK-CTS/P6	○	5	25 ~ 40	25 ~ 40	4	4	400	1	1	2.5	THT	
○	STK-CTS/PR	○	5	50	50	4	4	400	1	1.5	2.5	THT	
○	STK-CTS/CB	○	5	32	32	4	4	400	1	1	3	THT	
○	STK-CTS/C4	○	5	32	32	4	4	400	1	1	3	THT	
○	STK-CTS/CE	○	5	50	50	4	4	400	1	1	3	THT	
○	STK-CTS/CC	○	5	50	50	4	4	400	1	1	3	SMT	
○	STK-CTS/A1	○	5	25	25	4	4	180	1	1	2.5	THT	
○	STK-616TMW	○	3.3, 5	20 ~ 65	20 ~ 65	4	3.6	600	0.2	1.5	3.5	SMT	
○	STK-616TMWD	○	3.3, 5	20 ~ 65	1, 20 ~ 65	8	5	600	0.2	1.5	3.5	SMT	



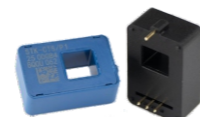
SCT-CTS/P1



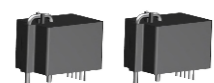
SCT-CTS/P



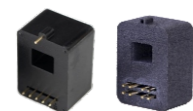
STK-CTS/C1



STK-CTS/P5, P6, PR



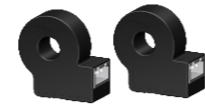
STK-CTS/CB



STK-CTS/CC, C4



STK-CTS/CE



STK-CTS/A1

### ◎ String

Technology	Type	Out	Vcc (V)	I <sub>pn</sub> (A)	I <sub>pm</sub> (A)	U <sub>ESD</sub> (kV)	U <sub>d</sub> (kV)	BW (kHz)	t <sub>r</sub> (μs)	X@IPN TA=25°C (%FS)	X <sub>TRange</sub> (%FS)	Connction	Application
○	STK-616AM	○	3.3, 5	25 ~ 100	25 ~ 100	4	4	600	0.9	1.5	3.5	SMT	String
○	STK-616AM3	○	3.3, 5	50 ~ 180	50 ~ 180	4	4	600	0.9	1	3.5	SMT	
○	STK-616AM5	○	3.3, 5	20 ~ 200	20 ~ 200	4	4	600	0.9	1.5	3.5	SMT	
○	STK-616AM8	○	3.3, 5	50 ~ 133	50 ~ 133	4	4	600	0.9	1	3.5	SMT	
○	STK-616BML	○	3.3, 5	6.5 ~ 65	6.5 ~ 65	4	3.6	600	0.9	1.5	3.5	SMT	
○	STK-616DML	○	3.3, 5	6 ~ 25	14.5 ~ 75	4	3.6	600	0.9	1.5	3.5	SMT	
○	STK-616HML	○	3.3, 5	10 ~ 30	25 ~ 75	4	3.6	600	0.9	1.5	3.5	SMT	
○	STK-616KMF	○	3.3, 5	20 ~ 65	20 ~ 65	4	3.6	1500	0.2	1.5	3.5	SMT	
○	STK-616TML	○	3.3, 5	10 ~ 133	10 ~ 133	4	3.6	600	0.9	3.5	3.5	SMT	
○	STK-616TMF	○	3.3, 5	10 ~ 65	10 ~ 65	4	3.6	1500	0.2	1.5	3.5	SMT	
○	STK-616TMF5	○	3.3, 5	10 ~ 133	10 ~ 133	4	3.6	1500	0.6	1.5	3.5	SMT	
○	STK-616TMM	○	3.3, 5	20 ~ 65	20 ~ 65	4	3.6	600	0.2	1.5	3.5	SMT	
○	STK-616TMW	○	3.3, 5	20 ~ 65	20 ~ 65	4	3.6	600	0.2	1.5	3.5	SMT	
○	STK-616TMWD	○	3.3, 5	20 ~ 65	1, 20 ~ 65	8	5	600	0.2	1.5	3.5	SMT	
○	STK-616ZMF	○	3.3, 5	10 ~ 65	10 ~ 65	2	3.6	2000	0.05	1.5	3.5	SMT	
○	STK-PL/A	○	5	10 ~ 50	25 ~ 125	5	4	400	1.5	1	2	THT	
○	STK-PL/Z	○	3.3, 5	50 ~ 180	125 ~ 450	4	5	400	1.5	1	2	THT	
○	STK-HD/P	○	5, 3.3	5 ~ 30	12.5 ~ 75	4	4	600	1	1	3	THT	
○	STK-HD/K	○	5	20 ~ 50	50 ~ 100	4	4	600	1	0.8	1.5	THT	



STK-616TMW, TMWD



STK-616ZM



STK-616AMx



STK-616xM



STK-PL/A



STK-PL/Z



STK-HD/P



STK-HD/K

### ◎ MPPT

Technology	Type	Out	Vcc (V)	I <sub>pn</sub> (A)	I <sub>pm</sub> (A)	U <sub>ESD</sub> (kV)	U <sub>d</sub> (kV)	BW (kHz)	t <sub>r</sub> (μs)	X@IPN TA=25°C (%FS)	X <sub>TRange</sub> (%FS)	Connction	Application
○	STK-HO	○	5	60 ~ 150	150 ~ 375	4	4	200	2	1.5	3	THT	MPPT
○	STK-HO/2	○	5	60 ~ 250	150 ~ 625	4	4.3	200	1.5	1	3	THT	
○	STK-HO/4	○	5	50 ~ 250	125 ~ 625	4	4.3	200	1.5	1	3	THT	
○	STK-HO/1	○	5	100 ~ 200	300 ~ 600	4	4.3	200	2	1	3	THT	
○	STK-HO/P	○	5	50 ~ 400	150 ~ 600	4	4.3	50	5	1	3	THT	
○	STK-HO/B	○	5	50 ~ 180	125 ~ 350	4	4	1000	0.2	1	3	THT	
○	STK-200HO/YS	○	5	±200	1250	4	5.4	180	3	3.3	4	THT	
○	STK-500HO/YS	○	5	±500	1250	4	5.4	180	3	3.3	4	THT	



STK-HO



STK-HO/2



STK-HO/1&4



STK-HO/P



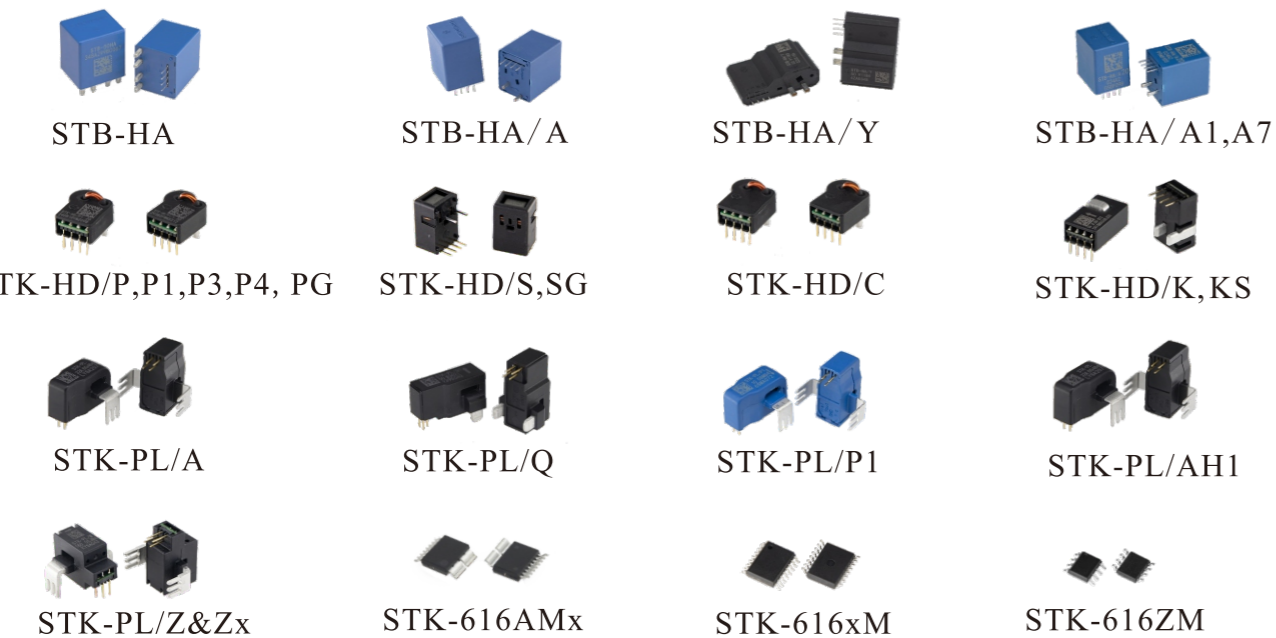
STK-HO/B



STK-HO/YS

◎ MPPT

Technology			Out			Vcc (V)	I <sub>pn</sub> (A)	I <sub>pm</sub> (A)	UESD (kV)	Ud (kV)	BW (kHz)	t <sub>r</sub> (μs)	X@IPN TA=25°C (%FS)	X <sub>-</sub> TRange (%FS)	Connction	Application
Open-loop	Closed-loop	Fluxgate	Voltage	Digital	Current											
O					±15	3~40	9~120	4	4	150	1.5	0.8	0.8	THT	MPPT	
O					±15	10~60	30~180	4	4	150	1.5	0.8	0.8	THT		
O					±15	50	150	4	4	150	1.5	0.8	0.8	THT		
O					±15	25	75	4	NA	150	1.5	1.5	1.5	THT		
O					±15	50	150	4	NA	150	1.5	1.5	1.5	THT		
O					3.3, 5	5~30	12.5~75	4	4	600	1	1	3	THT		
O					5	3~10	7.5~25	4	4	800	0.4	0.8	1.5	THT		
O					5	20~40	NA	4	4	400	1	1	3	THT		
O					5	20~50	50~100	4	4	600	1	0.8	1.5	THT		
O					5	20~50	50~100	4	4	600	1	0.8	1.5	THT		
O					3.3	20~50	50~100	4	4	600	1	0.8	1.5	THT		
O					5	20~30	20~50	4	4	600	1	1	3	THT		
O					5	20	20	4	4	600	1	1	3	THT		
O					5	20	50	4	4	600	1	1	3	THT		
O					5	15	NA	4	4	600	0.4	0.8	1.5	THT		
O					5	5~30	12.5~75	4	4	1000	0.5	1	3	THT		
O					5	10~50	25~125	5	4	400	1.5	1	2	THT		
O					5	50	50	5	4	300	1.5	1.5	3	THT		
O					3.3	10~50	30~150	5	4	400	1.5	1	2	THT		
O					5	10~50	25~125	5	4	400	1.5	1	2	THT		
O					3.3, 5	50~180	125~450	4	5	400	1.5	1	2	THT		
O					5	50	150	4	5	400	1.5	1	3	THT		
O					5	100	200	4	5	400	1.5	1	3	THT		
O					3.3	50	150	4	5	400	1.5	1	3	THT		
O					5	200	500	4	5	300	1.5	1	2	THT		
O					3.3, 5	25~100	25~100	4	4	600	0.9	1.5	3.5	SMT		
O					3.3, 5	50~180	50~180	4	4	600	0.9	1	3.5	SMT		
O					3.3, 5	20~200	20~200	4	4	600	0.9	1.5	3.5	SMT		
O					3.3, 5	50~133	50~133	4	4	600	0.9	1	3.5	SMT		
O					3.3, 5	6.5~65	6.5~65	4	3.6	600	0.9	1.5	3.5	SMT		
O					3.3, 5	6~25	14.5~75	4	3.6	600	0.9	1.5	3.5	SMT		
O					3.3, 5	10~30	25~75	4	3.6	600	0.9	1.5	3.5	SMT		
O					3.3, 5	20~65	20~65	4	3.6	1500	0.2	1.5	3.5	SMT		
O					3.3, 5	10~133	10~133	4	3.6	600	0.9	3.5	3.5	SMT		
O					3.3, 5	10~65	10~65	4	3.6	1500	0.2	1.5	3.5	SMT		
O					3.3, 5	10~133	10~133	4	3.6	1500	0.6	1.5	3.5	SMT		
O					3.3, 5	20~65	20~65	4	3.6	600	0.2	1.5	3.5	SMT		
O					3.3, 5	20~65	20~65	4	3.6	600	0.2	1.5	3.5	SMT		
O					3.3, 5	20~65	1,20~65	8	5	600	0.2	1.5	3.5	SMT		
O					3.3, 5	10~65	10~65	2	3.6	2000	0.05	1.5	3.5	SMT		



◎ AC

Technology			Out			Vcc (V)	I <sub>pn</sub> (A)	I <sub>pm</sub> (A)	UESD (kV)	Ud (kV)	BW (kHz)	t <sub>r</sub> (μs)	X@IPN TA=25°C (%FS)	X <sub>-</sub> TRange (%FS)	Connction	Application
Open-loop	Closed-loop	Fluxgate	Voltage	Digital	Current											
O					5	15~75	51~220	4	5	400	0.3	0.8	2.5	THT	AC	
O	O				5	6~75	20~220	4	5	400	0.3	0.8	1.4	THT		
O	O				5	6~75	20~220	4	4	400	0.3	0.8	1.1	THT		
O	O				5	25~50	85~150	4	4	400	0.3	0.8	1.1	THT		
O					5	25	85	4	4	400	0.3	0.8	1.15	THT		
O					5	25	50.1	4	8	200	1	0.5	0.5	THT		
O					±12~±15	50~150	200~240	4	4	150	0.5	0.5	0.5	THT		
O					±12~±15	25~100	55~200	4	4	150	0.5	NA	0.5	THT		
O					5	25	25	4	4	200	0.3	10	10	THT		
O	O				±12 or ±15	100	188,236	NA	1.8	200	1	0.1	0.1	THT		
O					±12~±15	25~100	55~175	4	4	150	0.5	0.5	1.5	THT		
O	O				±12~±15	25~100	55~175	4	5	150	0.5	0.5	NA	THT		
O					±12~±15	50	128	4	4	150	0.5	0.3	0.3	THT		
O	O				±15	200	NA	NA	3	100	1	0.5	0.6	THT		
O	O				±15	230	425,220	NA	3	100	1	0.5	0.5	THT		
O					5	100	220	4	4	300	0.5	0.8	1.1	THT		
O	O				5	100	200	4	4	100	1	0.7	0.7	THT		
O					5	300	600	4	4	300	0.6	0.8	1.1	THT		
O					5	300	600	4	4	300	0.6	0.8	1.1	THT		
O					12	50	50	4	4	100	/	10	10	THT		
O					5	250	380,450	4	4	200	3	1	1.4	THT		
O					5	100~200	300~450	4	4	300	0.3	0.8	1.1	THT		
O					5	250	450	4	4	200	3	1	1.4	THT		



◎ AC

Technology		Type	Out			Vcc (V)	I <sub>pn</sub> (A)	I <sub>pm</sub> (A)	UESD (kV)	Ud (kV)	BW (kHz)	t <sub>r</sub> (μs)	X@IPN TA=25°C (%FS)	X_TRange (%FS)	Connction	Application
Open-loop	Closed-loop		Voltage	Digital	Current											
O		STK-PL/A	O		5	10~50	25~125	5	4	400	1.5	1	2	THT	AC	
O		STK-PL/Q	O		5	50	50	5	4	300	1.5	1.5	3	THT		
O		STK-PL/P1	O		3.3	10~50	30~150	5	4	400	1.5	1	2	THT		
O		STK-PL/AH1	O		5	10~50	25~125	5	4	400	1.5	1	2	THT		
O		STK-PL/Z	O		3.3, 5	50~180	125~450	4	5	400	1.5	1	2	THT		
O		STK-50PL/Z1	O		5	50	150	4	5	400	1.5	1	3	THT		
O		STK-100PL/Z2	O		5	100	200	4	5	400	1.5	1	3	THT		
O		STK-50PL/Z3	O		3.3	50	150	4	5	400	1.5	1	3	THT		
O		STK-200PL/Z	O		5	200	500	4	5	300	1.5	1	2	THT		
O		STK-HD/P	O		5, 3.3	5~30	12.5~75	4	4	600	1	1	3	THT		
O		STK-HD/K	O		5	20~50	50~100	4	4	600	1	0.8	1.5	THT		
O		STK-PL/A	O		5	10~50	25~125	5	4	400	1.5	1	2	THT		
O		STK-PL/Z	O		3.3, 5	50~180	125~450	4	5	400	1.5	1	2	THT		
O		STB-CAB500	O		12	500	NA	4	2.5	NA	NA	NA	0.5	Clamping	AC(grid)	
O		STB-CAB540	O		12	540	NA	4	2.5	NA	NA	NA	0.5	Clamping		
O		STB-CAB600X-XXC	O		12	540	NA	4	2.5	NA	NA	NA	0.5	Clamping		
O		STB-CAB500x-xxx	O		12	500	NA	4	2.5	NA	NA	NA	0.5	Clamping		
O		STB-CAB1000X-xx	O		12	1000	NA	4	2.5	NA	NA	NA	0.5	Clamping		
O		STB-CABxxN-xxF	O		12	500~700	NA	4	2.5	NA	NA	NA	0.5	Clamping		
O		STB-CAB1500	O		12	600	NA	4	2.5	NA	NA	NA	0.5	Clamping		

◎ Residual

Technology		Type	Out			Vcc (V)	I <sub>pn</sub> (A)	I <sub>pm</sub> (A)	UESD (kV)	Ud (kV)	BW (kHz)	t <sub>r</sub> (μs)	X@IPN TA=25°C (%FS)	X_TRange (%FS)	Connction	Application
Open-loop	Closed-loop		Voltage	Digital	Current											
															Residual	



◎ Power Grid

Technology			Type	Out			Vcc (V)	I <sub>pn</sub> (A)	I <sub>pm</sub> (A)	UESD (kV)	Ud (kV)	BW (kHz)	t <sub>r</sub> (μs)	X@IPN TA=25°C (%FS)	X_TRange (%FS)	Connction	Application
Open-loop	Closed-loop	Fluxgate		Voltage	Digital	Current											
O			STB-LA			±12 ~ ±15	50 ~ 150	200 ~ 240	4	4	150	0.5	0.5	0.5		THT	Power Grid
O			STB-LA/N1			±12 ~ ±15	25 ~ 100	55 ~ 200	4	4	150	0.5	NA	0.5		THT	
O		O	STB-LA/A			5	25	25	4	4	200	0.3	10	10		THT	
O	O		STB-LA/B			±12 or ±15	100	188, 236	NA	1.8	200	1	0.1	0.1		THT	
O			STB-LA/D			±12 ~ ±15	25 ~ 100	55 ~ 175	4	4	150	0.5	0.5	1.5		THT	
O	O		STB-LA/DF			±12 ~ ±15	25 ~ 100	55 ~ 175	4	5	150	0.5	0.5	NA		THT	
O			STB-50LA/DH			±12 ~ ±15	50	128	4	4	150	0.5	0.3	0.3		THT	
O	O		STB-LA/E			±15	200	NA	NA	3	100	1	0.5	0.6		THT	
O	O		STB-LA/F			±15	230	425, 220	NA	3	100	1	0.5	0.5		THT	
O			STB-LA/S			5	100	220	4	4	300	0.5	0.8	1.1		THT	
O	O		STB-LA/SF			5	100	200	4	4	100	1	0.7	0.7		THT	
O			STB-LA/M			5	300	600	4	4	300	0.6	0.8	1.1		THT	
O			STB-300LA/M			5	300	600	4	4	300	0.6	0.8	1.1		THT	
O			STB-LA/AM3			12	50	50	4	4	100	/	10	10		THT	
O			STB-250LA/ZR			5	250	380, 450	4	4	200	3	1	1.4		THT	
O			STB-LA/Zx			5	100 ~ 200	300 ~ 450	4	4	300	0.3	0.8	1.1		THT	
O			STB-250LA/Zx			5	250	450	4	4	200	3	1	1.4		THT	
O			STK-BS1			±15	100 ~ 600	300 ~ 900	4	4	50 ~ 150	2 ~ 7	1	2		THT	
O			STK-BS2			±15	500	900	4	4	50	5	1	1		THT	
O			STK-BS6			±15	50 ~ 600	150 ~ 900	4	4	50	5	1	1		THT	
O			STK-BS9			±15	50 ~ 600	150 ~ 900	4	4	50 ~ 150	3	1	2		THT	
O			STK-BS10			±15	100 ~ 600	300 ~ 900	4	4	50 ~ 150	2 ~ 4	1	2		THT	
O			STK-BS/S1			5	50 ~ 600	150 ~ 1100	4	3.3	60	3.5	1	3.5		THT	
O			STK-BS/S2			5	50 ~ 600	150 ~ 1100	4	3.3	60	3.5	1	3.5		THT	
O			STK-BS/S3			5	50 ~ 600	150 ~ 1100	4	3.3	250	3.5	1	3.5		THT	
O			STK-BS/H			±15	50 ~ 400	150 ~ 600	4	2.5	50	3	1	3		THT	
O			STK-BS/H4			15	50 ~ 100	150 ~ 450	4	2.5	50	3	1	2		THT	
O			STK-BS/A			±12 ~ ±15	300 ~ 1000	900 ~ 3000	4	5	25	3	1	1		THT	
O			STK-BS1B			±15	100 ~ 600	300 ~ 900	4	4	70 ~ 150	2 ~ 4	1	2		THT	
O			STK-BS1L			±15	100 ~ 600	300 ~ 900	4	4	70 ~ 150	2 ~ 4	1	2		THT	



◎ Wind power

Technology			Type	Out			Vcc (V)	I <sub>pn</sub> (A)	I <sub>pm</sub> (A)	UESD (kV)	Ud (kV)	BW (kHz)	t <sub>r</sub> (μs)	X@IPN TA=25°C (%FS)	X_TRange (%FS)	Connction	Application
Open-loop	Closed-loop	Fluxgate		Voltage	Digital	Current											
O			STK-BS/T			±12 ~ ±15	200 ~ 1500	600 ~ 2500	4	4.9	25	5	1	1		Clamping	Wind power & Power Grid
O			STK-BS/T5			±15	163 ~ 2184	500 ~ 2500	4	4.9	25	5	1	1		Clamping	
O			STK-BS/X			±12 ~ ±15	500 ~ 2500	1500 ~ 5500	4	4	25	5	1	1		Clamping	
O			STK-BS/X2			±15	3000 ~ 6000	4500 ~ 12000	4	5.6	1	0.2 ms	1	1		Clamping	
O			STK-BS/X4			±12 ~ ±15	500 ~ 2500	1500 ~ 5500	4	5	25	5	1	1		Clamping	
O			STK-BS/X5			±12 ~ ±15	500 ~ 2500	1500 ~ 5500	4	4	25	5	1	1		Clamping	
O			STK-BS/X6			±12 ~ ±15	500 ~ 2500	1500 ~ 5500	4	5	25	5	1	1		Clamping	
O			STK-BS/X7			±12 ~ ±15	1200 ~ 3000	3600 ~ 5500	4	5	25	5	1	1		Clamping	
O			STK-HO			5	60 ~ 150	150 ~ 375	4	4	200	2	1.5	3		THT	
O			STB-LF			±12 ~ ±15	100 ~ 200	200 ~ 420	4	4	100	0.5	0.3	0.2		Clamping	
O			STB-LF2			±12 ~ ±15	200 ~ 300	500 ~ 600	4	5	100	1	0.3	0.3		Clamping	
O			STB-LF/2			±15 ~ ±18	500	800	4	4.95	100	0.5	0.4	0.4		Clamping	
O			STB-LF/3			±15	366	950	4	3	100	1	0.42	0.42		Clamping	
O			STB-LF4			±12 ~ ±20	300	500	4	3.8	100	1	0.5	0.5		Clamping	
O			STB-LF4-A			±24	300	860	4	3.8	100	1	0.47	0.47		Clamping	
O			STB-LF4-B			±12 ~ ±20	300	500	4	3.8	100	1	0.47	0.47		Clamping	
O			STB-LF5			±15 ~ ±24	500	800	4	3.8	200	0.5	0.5	0.6		Clamping	
O			STB-LF5-A			±15 ~ ±24	500	800	4	4	200	1	0.6	0.6		Clamping	
O			STB-LF5-B			±15 ~ ±24	500	800	4	4	200	1	0.6	0.6		Clamping	
O			STB-LF5-S			±24	622	1700	4	3	100	1	0.6	0.6		Clamping	
O			STB-LF6			±15 ~ ±24	1000	1500	4	3.8	200	0.5	0.4	0.4		Clamping	
O			STB-LF7			±15	180	540	4	2.5	100	1	1.2	1.2		Clamping	
O			STB-LF8			±15	88	240	4	2.5	100	1	1.2	1.2		Clamping	
O			STB-LF9			±15 ~ ±20	300	700	3	3	100	1	0.3	0.36		Clamping	



# 02

## EV APPLICATION

AEC-Q100 Qualified · Wide range of current detection  
 ISO26262 · ASIL B



### ◎ EPS & Headlight Power supply

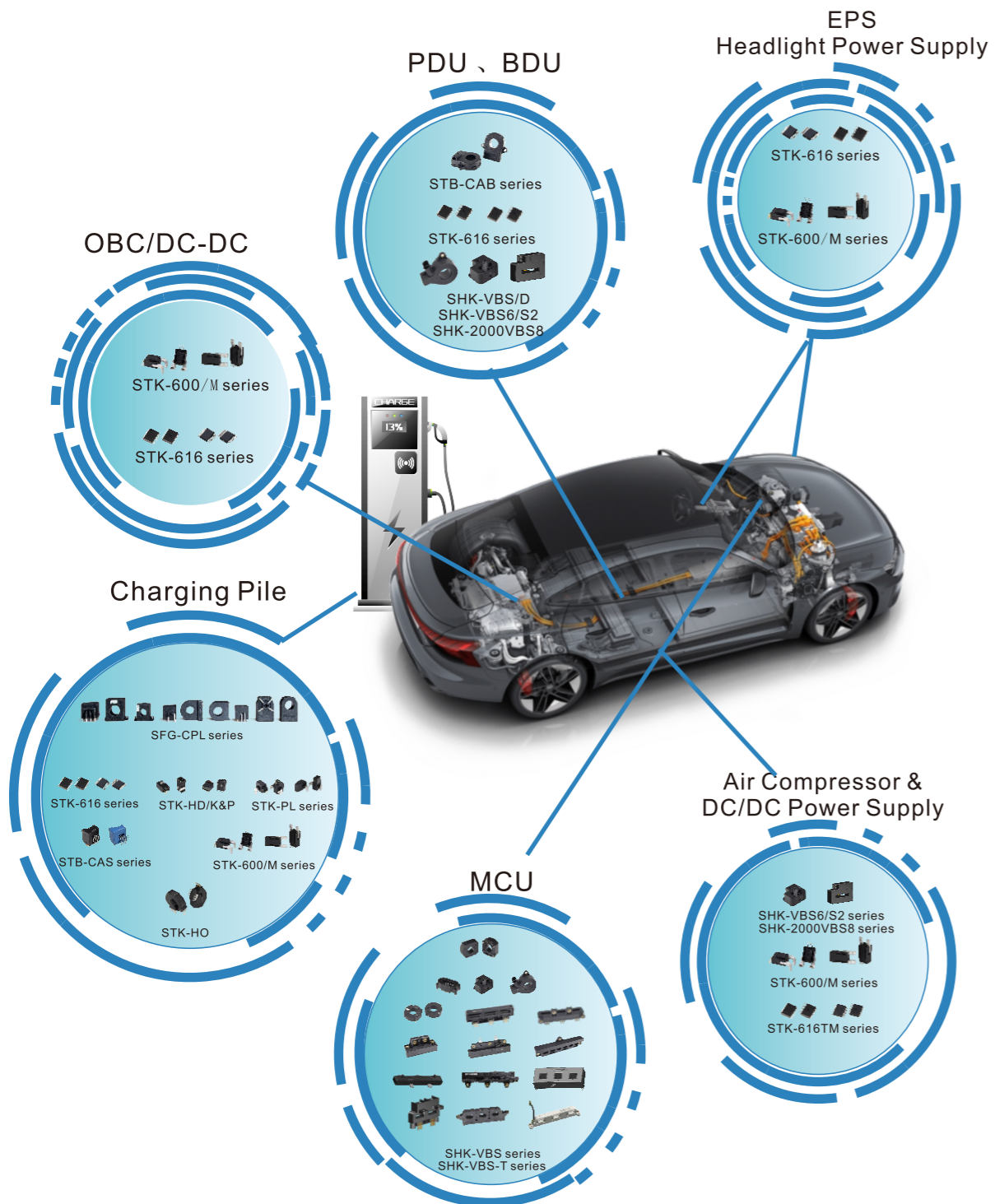
Technology	Type	Out		Vcc (V)	I <sub>pn</sub> (A)	I <sub>pm</sub> (A)	U <sub>iso</sub> (kV)	U <sub>d</sub> (kV)	BW (kHz)	t <sub>r</sub> (μs)	X@I <sub>pn</sub> TA=25°C (%FS)	X <sub>T</sub> Range (%FS)	Connction	Application
		Voltage	Current											
Open-loop	STK-600/M-MPFF&MPSF	O		3.3, 5	50, 100	50 ~ 250	4	4	120	4.6	2.4	3.5	THT	EPS
Closed-loop	STK-600-M-PFF&PSF&PSS	O		3.3, 5	50, 100	50 ~ 400	4	4	120	4.6	2.4	3.5	THT	
Fluxgate	STK-616ZMF	O		3.3, 5	10 ~ 65	10 ~ 65	2	3.6	2000	0.05	1.5	3.5	SMT	Headlight Power supply
	STK-616ZMT	O		3.3, 5	10 ~ 65	10 ~ 65	4	2.4	2000	0.05	1.5	3.5	SMT	



STK-600/M -PFF&PSF&PSS STK-600/M-MPFF&MPSF STK-616ZMF STK-616ZMT

### ◎ Air Compressor & DC/DC Power supply /

Technology	Type	Out		Vcc (V)	I <sub>pn</sub> (A)	I <sub>pm</sub> (A)	UESD (kV)	U <sub>d</sub> (kV)	BW (kHz)	t <sub>r</sub> (μs)	X@IPN TA=25°C (%FS)	X <sub>T</sub> Range (%FS)	Connction	Application
		Voltage	Current											
Open-loop	SHK-VBS2-D	O		5	545	1090	4	4	NC	3.5	1.5	3	THT	Air Compressor & DC/DC Power supply
Closed-loop	SHK-VBS3	O		5	100 ~ 900	100 ~ 900	5	4	100	3.5	2	3.5	THT	
Fluxgate	SHK-VBS3/Sx	O		5	400 ~ 900	400 ~ 900	4	4	100	3.5	1	3.5	THT	
	STK-600/M-MPFF&MPSF	O		3.3, 5	50, 100	50 ~ 250	4	4	120	4.6	2.4	3.5	THT	
	STK-600-M-PFF&PSF&PSS	O		3.3, 5	50, 100	50 ~ 400	4	4	120	4.6	2.4	3.5	THT	
	STK-616AM	O		3.3, 5	25 ~ 100	25 ~ 100	4	4	600	0.9	1.5	3.5	SMT	
	STK-616AM3	O		3.3, 5	50 ~ 180	50 ~ 180	4	4	600	0.9	1	3.5	SMT	
	STK-616AM5	O		3.3, 5	20 ~ 200	20 ~ 200	4	4	600	0.9	1.5	3.5	SMT	
	STK-616AM8	O		3.3, 5	50 ~ 133	50 ~ 133	4	4	600	0.9	1	3.5	SMT	
	STK-616BML	O		3.3, 5	6.5 ~ 65	6.5 ~ 65	4	3.6	600	0.9	1.5	3.5	SMT	
	STK-616DML	O		3.3, 5	6 ~ 25	14.5 ~ 75	4	3.6	600	0.9	1.5	3.5	SMT	
	STK-616HML	O		3.3, 5	10 ~ 30	25 ~ 75	4	3.6	600	0.9	1.5	3.5	SMT	
	STK-616KMF	O		3.3, 5	20 ~ 65	20 ~ 65	4	3.6	1500	0.2	1.5	3.5	SMT	
	STK-616TML	O		3.3, 5	10 ~ 133	10 ~ 133	4	3.6	600	0.9	3.5	3.5	SMT	
	STK-616TMF	O		3.3, 5	10 ~ 65	10 ~ 65	4	3.6	1500	0.2	1.5	3.5	SMT	
	STK-616TMF5	O		3.3, 5	10 ~ 133	10 ~ 133	4	3.6	1500	0.6	1.5	3.5	SMT	
	STK-616TMM	O		3.3, 5	20 ~ 65	20 ~ 65	4	3.6	600	0.2	1.5	3.5	SMT	
	STK-616TMW	O		3.3, 5	20 ~ 65	20 ~ 65	4	3.6	600	0.2	1.5	3.5	SMT	
	STK-616TMWD	O		3.3, 5	20 ~ 65	1,20 ~ 65	8	5	600	0.2	1.5	3.5	SMT	
	STK-616ZMF	O		3.3, 5	10 ~ 65	10 ~ 65	4	3.6	2000	0.05	1.5	3.5	SMT	



◎ OBC, DC/DC & BMS

Technology		Type	Out			Vcc (V)	I <sub>pn</sub> (A)	I <sub>pm</sub> (A)	U <sub>ESD</sub> (kV)	U <sub>d</sub> (kV)	BW (kHz)	t <sub>r</sub> (μs)	X@IPN TA=25°C (%FS)	X_Trang (%FS)	Connction	Application
Open-loop	Closed-loop		Voltage	Digital	Current											
O		STK-600/M-PFF&PSF&MPSF	O		3.3, 5	50, 100	50 ~ 250	4	4	120	4.6	2.4	3.5	THT	OBC,DC/DC	
O		STK-600-M-PFF&PSF&PSS	O		3.3, 5	50, 100	50 ~ 400	4	4	120	4.6	2.4	3.5	THT		
O		STK-616AM	O		3.3, 5	25 ~ 100	25 ~ 100	4	4	600	0.9	1.5	3.5	SMT		
O		STK-616AM3	O		3.3, 5	50 ~ 180	50 ~ 180	4	4	600	0.9	1	3.5	SMT		
O		STK-616AM5	O		3.3, 5	20 ~ 200	20 ~ 200	4	4	600	0.9	1.5	3.5	SMT		
O		STK-616AM8	O		3.3, 5	50 ~ 133	50 ~ 133	4	4	600	0.9	1	3.5	SMT		
O		STK-616BML	O		3.3, 5	6.5 ~ 65	6.5 ~ 65	4	3.6	600	0.9	1.5	3.5	SMT		
O		STK-616DML	O		3.3, 5	6 ~ 25	14.5 ~ 75	4	3.6	600	0.9	1.5	3.5	SMT		
O		STK-616HML	O		3.3, 5	10 ~ 30	25 ~ 75	4	3.6	600	0.9	1.5	3.5	SMT		
O		STK-616KMF	O		3.3, 5	20 ~ 65	20 ~ 65	4	3.6	1500	0.2	1.5	3.5	SMT		
O		STK-616TML	O		3.3, 5	10 ~ 133	10 ~ 133	4	3.6	600	0.9	3.5	3.5	SMT		
O		STK-616TMF	O		3.3, 5	10 ~ 65	10 ~ 65	4	3.6	1500	0.2	1.5	3.5	SMT		
O		STK-616TMF5	O		3.3, 5	10 ~ 133	10 ~ 133	4	3.6	1500	0.6	1.5	3.5	SMT		
O		STK-616TMM	O		3.3, 5	20 ~ 65	20 ~ 65	4	3.6	600	0.2	1.5	3.5	SMT		
O		STK-616TMW	O		3.3, 5	20 ~ 65	20 ~ 65	4	3.6	600	0.2	1.5	3.5	SMT		
O		STK-616TMWD	O		3.3, 5	20 ~ 65	1,20 ~ 65	8	5	600	0.2	1.5	3.5	SMT		
O		STB-CAB500	O		12	500	NA	4	2.5	NA	NA	NA	0.5	Clamping		OBC,DC/DC,BMS
O		STB-CAB540	O		12	540	NA	4	2.5	NA	NA	NA	0.5	Clamping		
O		STB-CAB600X-XXC	O		12	540	NA	4	2.5	NA	NA	NA	0.5	Clamping		
O		STB-CAB500x-xxx	O		12	500	NA	4	2.5	NA	NA	NA	0.5	Clamping		
O		STB-CAB1000X-xx	O		12	1000	NA	4	2.5	NA	NA	NA	0.5	Clamping		
O		STB-CABxxN-xxF	O		12	500~700	NA	4	2.5	NA	NA	NA	0.5	Clamping		
O		STB-CAB1500	O		12	600	NA	4	2.5	NA	NA	NA	0.5	Clamping		



◎ Motor Controller /

Technology		Type	Out			Vcc (V)	I <sub>pn</sub> (A)	I <sub>pm</sub> (A)	U <sub>ESD</sub> (kV)	U <sub>d</sub> (kV)	BW (kHz)	t <sub>r</sub> (μs)	X@IPN TA=25°C (%FS)	X_TRang (%FS)	Connction	Application
Open-loop	Closed-loop		Voltage	Digital	Current											
O		SHK-VBS2-D	O		5	545	1090	4	4	NC	3.5	1.5	3	THT	Motor Controller	
O		SHK-VBS-D-A	O		5	75, 1000	NA	8	2.5	10	18	NA	3.3, 4.4	THT		
O		SHK-VBS-D-B	O		5	75, 500	NA	8	2.5	10	18	NA	3.3, 2.1	THT		
O		SHK-VBS-D-C	O		5	75, 750	NA	8	2.5	10	18	NA	3.3, 3	THT		
O		SHK-VBS-D-D	O		5	30, 350	NA	8	2.5	10	18	NA	3.3, 2.6	THT		
O		SHK-VBS-D-E	O		5	40, 400	NA	8	2.5	10	18	NA	3.7, 3.2	THT		

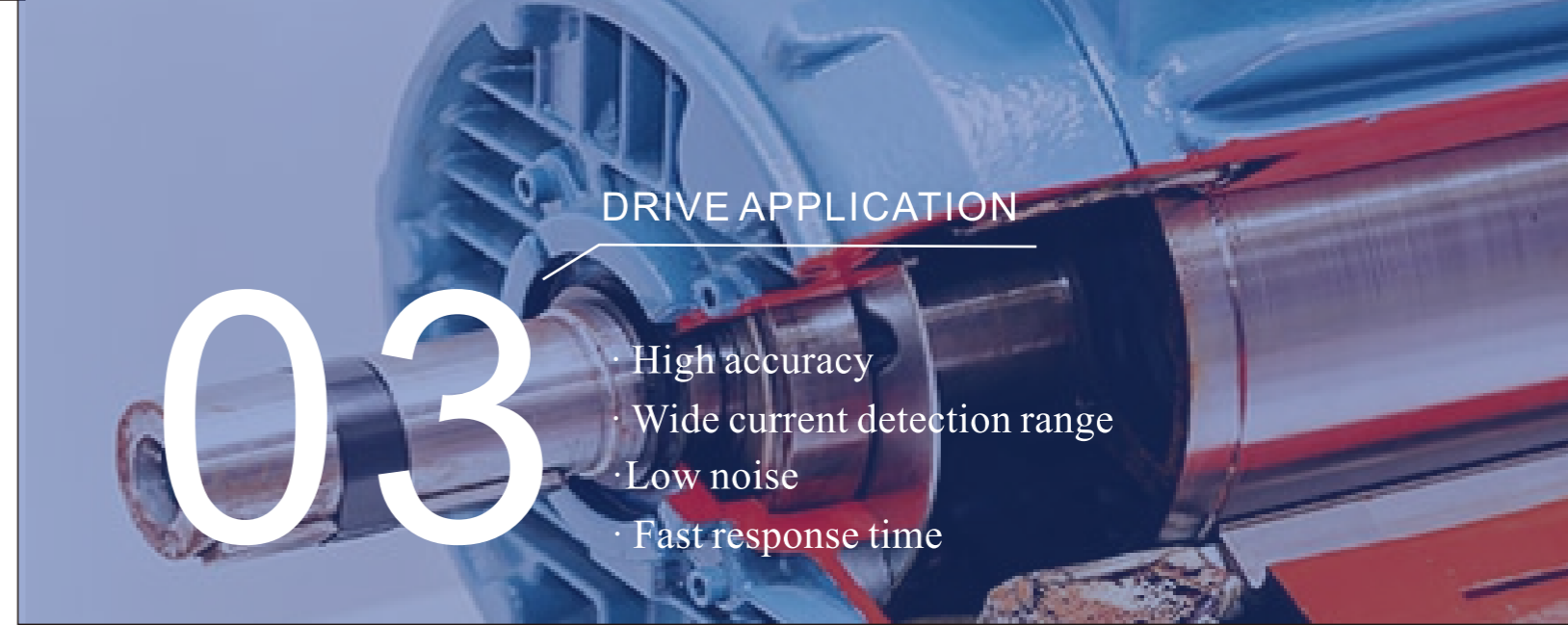
◎ Motor Controller

Technology		Type	Out			Vcc (V)	I <sub>pn</sub> (A)	I <sub>pm</sub> (A)	U <sub>ESD</sub> (kV)	U <sub>d</sub> (kV)	BW (kHz)	t <sub>r</sub> (μs)	X@IPN TA=25°C (%FS)	X_Trang (%FS)	Connction	Application
Open-loop	Closed-loop		Voltage	Digital	Current											
O		SHK-VBS3	O		5	100 ~ 900	100 ~ 900	5	4	100	3.5	2	3.5	THT	Motor Controller	
O		SHK-VBS3/Sx	O		5	400 ~ 900	400 ~ 900	4	4	100	3.5	1	3.5	THT		
O		SHK-VBS-A1-S2	O		5	600	600	4	4	100	3.5	1.5	3.5	THT		
O		SHK-VBS-A3-S3	O		5	500 ~ 1200	500 ~ 1200	4	2	40	2	2.75	4	THT		
O		SHK-VBS-A3-S2	O		5	1000 ~ 1600	1000 ~ 1600	4	2	40	2	2.75	4	THT		
O		SHK-VBS5	O		5	100 ~ 900	100 ~ 900	4	4	100	3.5	1	3	THT		
O		SHK-VBS6-S2	O		5	100 ~ 1500	100 ~ 1500	4	4	40	2	2.25	3.25	THT		
O		SHK-VBS8	O		5	2000	2000	8	2.5	40	2	2.25	3.25	THT		
O		SHK-VBS-T3	O		5	545	1090	4	4	100	3.5	2	2.5	Clamping		
O		SHK-VBS-T3-S4	O		5	545	1090	4	4	100	3.5	2	2.5	Clamping		
O		SHK-VBS-T4	O		5	545	1090	4	4	120	3.5	2	2.5	Clamping		
O		SHK-VBS-T5-S2	O		5	300	300	4	4	40	2	2	3.5	Clamping		
O		SHK-VBS-T6	O		5	800 ~ 1200	800 ~ 1200	4	4	40	2	4.5	5.5	Clamping		
O		SHK-VBS-T6-S3	O		5	800 ~ 1200	800 ~ 1200	4	4	40	2	4.5	5.5	Clamping		
O		SHK-VBS-T6-S5	O		5	800 ~ 1200	800 ~ 1200	4	4	40	2	2	3.5	Clamping		
O		SHK-VBS-T6-S6	O		5	800 ~ 1200	800 ~ 1200	8	2.5	40	2	4.5	5.5	Clamping		
O		SHK-VBS-T7-S2	O		5	600 ~ 700	300 ~ 700	4	4	40	2	2 ~ 4	2	3.5		Clamping
O		SHK-VBS-T8-S2	O		5	300 ~ 1200	300 ~ 1200	4	4	40	4	2	3.5	Clamping		
O		SHK-VBS-T8-S3	O		5	300 ~ 1200	300 ~ 1200	4	4	40	4	2	3.5	Clamping		
O		SHK-VBS-T8-S5	O		5	1000	1000	4	4	40	2	2	3.5	Clamping		
O		SHK-VBS-T8-S6	O		5	600	600	4	4	40	2	1.5	3.5	Clamping		
O		SHK-VBS-T8-S7	O		5	300 ~ 1200	300 ~ 1200	4	4	40	2	1.5	3	Clamping		
O		SHK-VBS-T8-S8	O		5	600 ~ 1100	600 ~ 1100	4	4	40	2	1.5	3	Clamping		
O		SHK-VBS-T9	O		5	600 ~ 1100	600 ~ 1100	4	4	40	2	NA	NA	Clamping		



◎ Motor Controller

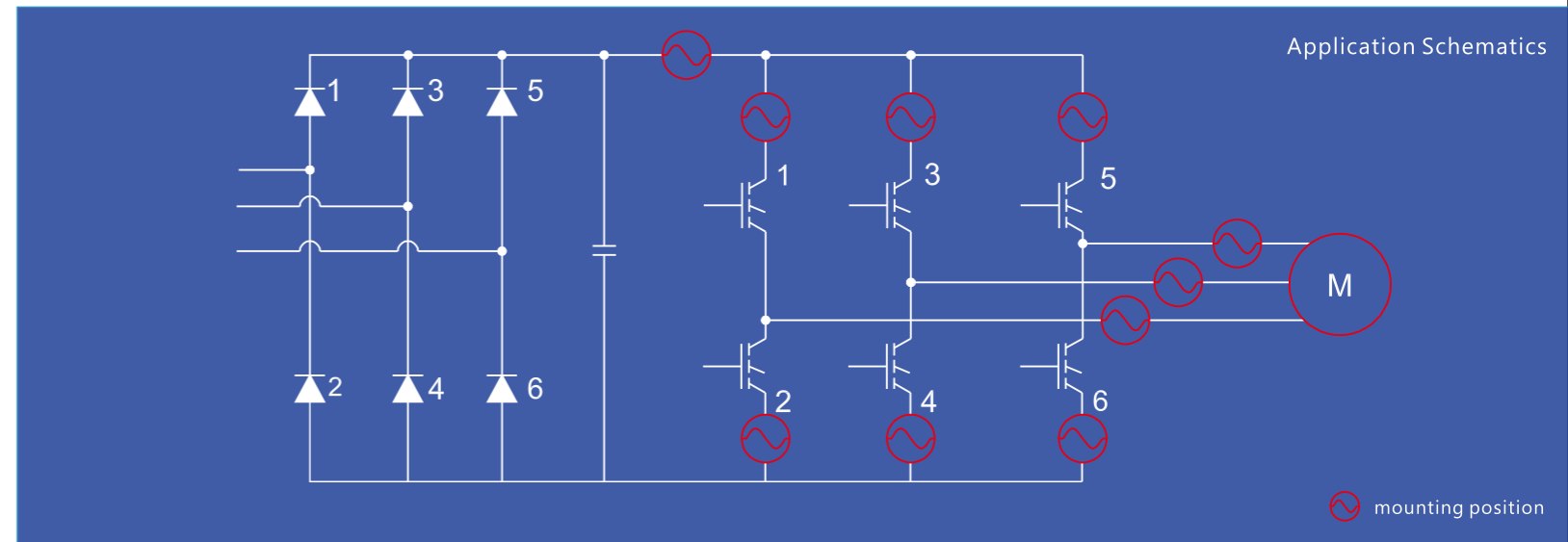
Technology		Type	Out		Vcc (V)	I <sub>pn</sub> (A)	I <sub>pm</sub> (A)	UESD (kV)	Ud (kV)	BW (kHz)	t <sub>r</sub> (μs)	X@IPN TA=25°C (%FS)	X_Trang (%)FS)	Connction	Application
Open-loop	Closed-loop		Voltage	Current											
O		SHK-VBS-TA-S2	O		5	600 ~ 700	600 ~ 700	8	2.5	40	2 ~ 4	1.5	3.75	Clamping	Motor Controller
O		SHK-VBS-TB-S2	O		5	250	250	8	2.5	40	2	3.15	0.75	Clamping	
O		SHK-VBS-TE-S2	O		5	100 ~ 200	100 ~ 200	4	1.5	40	4	1	2	Clamping	
O		SHK-VBS-TE-S5	O		5	800, 1200	800, 1200	2	2.5	40	2	2.75	1.5	Clamping	
O		SHK-VBS-TE-SA	O		5	1100	1100	2	2.5	40	2	2	3	Clamping	
O		SHK-VBS-TG	O		±15	50 ~ 200	150 ~ 600	2	2.5	60	7	3	3	Clamping	
O		SHK-VBS-TH-S2	O		5	660 ~ 1100	660 ~ 1100	2	2.5	40	2	1	3.5	Clamping	
O		SHK-VBS-TH-S3	O		5	900 ~ 1000	900 ~ 1000	8	2.8	40	2	1	3.5	Clamping	
O		SHK-VBS-TH-S5	O		5	700 ~ 900	700 ~ 900	8	2.8	40	2	1	3.5	Clamping	
O		SHK-VBS-TL-S2	O		5	800 ~ 1200	800 ~ 1200	8	2.8	40	2 ~ 4	2.75	3.5	Clamping	
O		SHK-VBS-TL-S3	O		5	1200	1200	8	2.8	40	2 ~ 4	2	3.5	Clamping	
O		SHK-VBS-TL-S8	O		5	800 ~ 1200	800 ~ 1200	8	2.8	40	2 ~ 4	1.75	3	Clamping	
O		SHK-VBS-TU-S2	O		5	600	600	8	2.5	40	2	1.5	3	Clamping	
O		SHK-VBS-TU-S3	O		5	1000	1000	8	2.5	40	2	2	3.5	Clamping	
O		SHK-VBS-TM-S2	O		5	600 ~ 1000	600 ~ 1000	8	2.8	40	2 ~ 4	4.5	5.5	Clamping	
O		SHK-VBS-TM-S3	O		5	600 ~ 1000	600 ~ 1000	8	2.8	40	2 ~ 4	4.5	5.5	Clamping	
O		SHK-VBS-TM-S5	O		5	900 ~ 1200	900 ~ 1200	8	2.8	40	2 ~ 4	2	3.5	Clamping	
O		SHK-VBS-TM-S6	O		5	900 ~ 1200	900 ~ 1200	8	2.8	40	2 ~ 4	2	3.5	Clamping	



DRIVE APPLICATION

03

- High accuracy
- Wide current detection range
- Low noise
- Fast response time



◎ Servo-drive&Variable frequency drives /

Technology		Type	Out		Vcc (V)	I <sub>pn</sub> (A)	I <sub>pm</sub> (A)	UESD (kV)	Ud (kV)	BW (kHz)	t <sub>r</sub> (μs)	X@IPN TA=25°C (%FS)	X_Trang (%)FS)	Connction	Application
Open-loop	Closed-loop		Voltage	Current											
O		STK-616AM	O		3.3, 5	25 ~ 100	25 ~ 100	4	4	600	0.9	1.5	3.5	SMT	Servo Drive & Variable frequency drive
O		STK-616AM3	O		3.3, 5	50 ~ 180	50 ~ 180	4	4	600	0.9	1	3.5	SMT	
O		STK-616AM5	O		3.3, 5	20 ~ 200	20 ~ 200	4	4	600	0.9	1.5	3.5	SMT	
O		STK-616AM8	O		3.3, 5	50 ~ 133	50 ~ 133	4	4	600	0.9	1	3.5	SMT	
O		STK-616BML	O		3.3, 5	6.5 ~ 65	6.5 ~ 65	4	3.6	600	0.9	1.5	3.5	SMT	
O		STK-616DML	O		3.3, 5	6 ~ 25	14.5 ~ 75	4	3.6	600	0.9	1.5	3.5	SMT	
O		STK-616HML	O		3.3, 5	10 ~ 30	25 ~ 75	4	3.6	600	0.9	1.5	3.5	SMT	
O		STK-616KMF	O		3.3, 5	20 ~ 65	20 ~ 65	4	3.6	1500	0.2	1.5	3.5	SMT	
O		STK-616TML	O		3.3, 5	10 ~ 133	10 ~ 133	4	3.6	600	0.9	3.5	3.5	SMT	
O		STK-616TMF	O		3.3, 5	10 ~ 65	10 ~ 65	4	3.6	1500	0.2	1.5	3.5	SMT	
O		STK-616TMF5	O		3.3, 5	10 ~ 133	10 ~ 133	4	3.6	1500	0.6	1.5	3.5	SMT	
O		STK-616TMM	O		3.3, 5	20 ~ 65	20 ~ 65	4	3.6	600	0.2	1.5	3.5	SMT	
O		STK-616TMW	O		3.3, 5	20 ~ 65	20 ~ 65	4	3.6	600	0.2	1.5	3.5	SMT	
O		STK-616TMWD	O		3.3, 5	20 ~ 65	1, 20 ~ 65	8	5	600	0.2	1.5	3.5	SMT	
O		STK-616ZMF	O		3.3, 5	10 ~ 65	10 ~ 65	2	3.6	2000	0.05	1.5	3.5	SMT	



STK-616AMx



STK-616xM



STK-616ZMF

◎ Servo-drive&Variable frequency drives

Technology	Type	Out		Vcc (V)	I <sub>pn</sub> (A)	I <sub>pm</sub> (A)	UESD (kV)	Ud (kV)	BW (kHz)	t <sub>r</sub> (μs)	X@IPN TA=25°C (%FS)	X_Trange (%FS)	Connction	Application
		Voltage Digital	Current											
O	STK-HD/P	O		5, 3.3	5 ~ 30	12.5 ~ 75	4	4	600	1	1	3	THT	Servo Drive & Variable frequency drive
O	STK-HD/S	O		5	3 ~ 10	7.5 ~ 25	4	4	800	0.4	0.8	1.5	THT	
O	STK-HD/C	O		5	20 ~ 40	NA	4	4	400	1	1	3	THT	
O	STK-HD/K	O		5	20 ~ 50	50 ~ 100	4	4	600	1	0.8	1.5	THT	
O	STK-HD/KA	O		5	20 ~ 50	50 ~ 100	4	4	600	1	0.8	1.5	THT	
O	STK-HD/KS	O		3.3	20 ~ 50	50 ~ 100	4	4	600	1	0.8	1.5	THT	
O	STK-HD/P1/x	O		5	20 ~ 30	20 ~ 50	4	4	600	1	1	3	THT	
O	STK-HD/P3	O		5	20	20	4	4	600	1	1	3	THT	
O	STK-HD/P4	O		5	20	50	4	4	600	1	1	3	THT	
O	STK-HD/SG	O		5	15	NA	4	4	600	0.4	0.8	1.5	THT	
O	STK-HD/P/G	O		5	5 ~ 30	12.5 ~ 75	4	4	1000	0.5	1	3	THT	
O	STB-CAS/x	O		5	15 ~ 75	51 ~ 220	4	5	400	0.3	0.8	2.5	THT	
O	STB-CAS/F	O		5	6 ~ 75	20 ~ 220	4	5	400	0.3	0.8	1.4	THT	
O	STB-CAS/FA	O		5	6 ~ 75	20 ~ 220	4	4	400	0.3	0.8	1.1	THT	
O	STB-CAS/K-FC	O		5	25 ~ 50	85 ~ 150	4	4	400	0.3	0.8	1.1	THT	
O	STB-CAS/RH	O		5	25	85	4	4	400	0.3	0.8	1.15	THT	
O	STB-CAS/FB	O		5	25	50.1	4	8	200	1	0.5	0.5	THT	



STK-HD/P



STK-HD/S



STK-HD/K



STK-HD/C



STK-HD/P1/x, P3, P4



STK-HD/SG



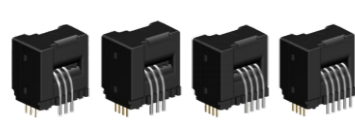
STK-HD/KS



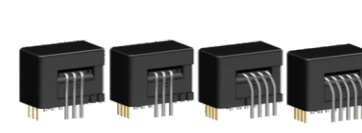
STK-HD/P/G



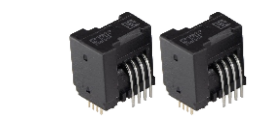
STB-CAS/x



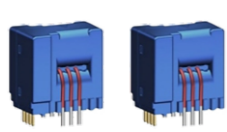
STB-CAS/F



STB-CAS/FA



STB-CAS/K-FC



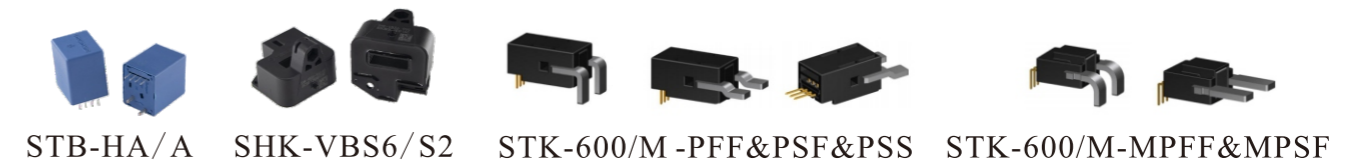
STB-CAS/RH



STB-CAS/FB

◎ Variable frequency drives

Technology	Type	Out		Vcc (V)	I <sub>pn</sub> (A)	I <sub>pm</sub> (A)	UESD (kV)	Ud (kV)	BW (kHz)	t <sub>r</sub> (μs)	X@IPN TA=25°C (%FS)	X_Trange (%FS)	Connction	Application
		Voltage Digital	Current											
O	STB-HA/A	O		±15	10 ~ 60	30 ~ 180	4	4	150	1.5	0.8	0.8	THT	Variable frequency drive
O	SHK-VBS6-S2	O		5	100 ~ 1500	100 ~ 1500	4	4	40	2	2.25	3.25	THT	
O	STK-600/M-MPFF&MPSP	O		5, 3.3	50, 100	50 ~ 250	4	4	120	4.6	2.4	3.5	THT	
O	STK-600/M-PFF&PSF&PSS	O		5, 3.3	50, 100	50 ~ 400	4	4	120	4.6	2.4	3.5	THT	
O	STB-LA	O		±12 ~ ±15	50 ~ 150	200 ~ 240	4	4	150	0.5	0.5	0.5	THT	
O	STB-LA/N1	O		±12 ~ ±15	25 ~ 100	55 ~ 200	4	4	150	0.5	NA	0.5	THT	
O	STB-LA/B	O		±12 or ±15	100	188, 236	NA	1.8	200	1	0.1	0.1	THT	
O	STB-LA/D	O		±12 ~ ±15	25 ~ 100	55 ~ 175	4	4	150	0.5	0.5	1.5	THT	
O	STB-LA/DF	O		±12 ~ ±15	25 ~ 100	55 ~ 175	4	5	150	0.5	0.5	NA	THT	
O	STB-50LA/DH	O		±12 ~ ±15	50	128	4	4	150	0.5	0.3	0.3	THT	
O	STB-LA/E	O		±15	200	NA	NA	3	100	1	0.5	0.6	THT	
O	STB-LA/F	O		±15	230	425, 220	NA	3	100	1	0.5	0.5	THT	
O	STB-LA/A	O		5	25	25	4	4	200	0.3	10	10	THT	
O	STB-LA/S	O		5	100	220	4	4	300	0.5	0.8	1.1	THT	
O	STB-LA/SF	O		5	100	200	4	4	100	1	0.7	0.7	THT	
O	STB-LA/M	O		5	300	600	4	4	300	0.6	0.8	1.1	THT	
O	STB-300LA/M	O		5	300	600	4	4	300	0.6	0.8	1.1	THT	
O	STB-LA/AM3	O		12	50	50	4	4	100	/	10	10	THT	
O	STB-250LA/ZR	O		5	250	380, 450	4	4	200	3	1	1.4	THT	
O	STB-LA/Zx	O		5	100 ~ 200	300 ~ 450	4	4	300	0.3	0.8	1.1	THT	
O	STB-250LA/Zx	O		5	250	450	4	4	200	3	1	1.4	THT	



STB-HA/A SHK-VBS6/S2 STK-600/M-PFF&PSF&PSS STK-600/M-MPFF&MPSP



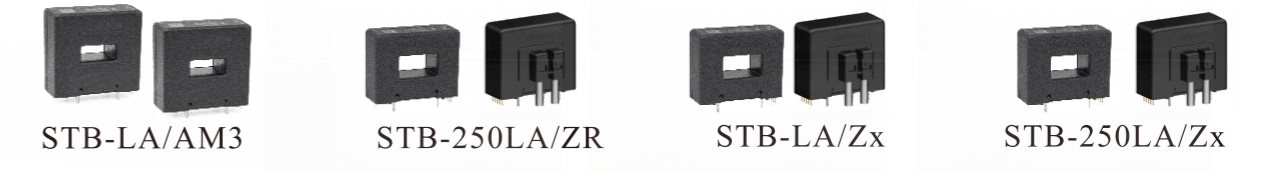
STB-LA STB-LA/N1 STB-LA/A STB-LA/B



STB-LA/D STB-LA/DF&DH STB-LA/E STB-LA/F



STB-LA/S&SF STB-LA/SF STB-LA/M STB-300LA/M



STB-LA/AM3 STB-250LA/ZR STB-LA/Zx STB-250LA/Zx

◎ Variable frequency drives

Technology		Type	Out		Vcc (V)	I <sub>pn</sub> (A)	I <sub>pm</sub> (A)	U <sub>ESD</sub> (kV)	U <sub>d</sub> (kV)	BW (kHz)	t <sub>r</sub> (μs)	X@IPN TA=25°C (%FS)	X_Trange (%FS)	Connction	Application
Open-loop	Closed-loop		Voltage	Current											
O		STK-BS1	O		±15	100~600	300~900	4	4	50~150	2~7	1	2	THT	Variable frequency drive
O		STK-BS2	O		±15	500	900	4	4	50	5	1	1	THT	
O		STK-BS6	O		±15	50~600	150~900	4	4	50	5	1	1	THT	
O		STK-BS9	O		±15	50~600	150~900	4	4	50~150	3	1	2	THT	
O		STK-BS10	O		±15	100~600	300~900	4	4	50~150	2~4	1	2	THT	
O		STK-BS/S1	O		5	50~600	150~1100	4	3.3	60	3.5	1	3.5	THT	
O		STK-BS/S2	O		5	50~600	150~1100	4	3.3	60	3.5	1	3.5	THT	
O		STK-BS/S3	O		5	50~600	150~1100	4	3.3	250	3.5	1	3.5	THT	
O		STK-BS/H	O		±15	50~400	150~600	4	2.5	50	3	1	3	THT	
O		STK-BS/H4	O		15	50~100	150~450	4	2.5	50	3	1	2	THT	
O		STK-BS/A	O		±12~±15	300~1000	900~3000	4	5	25	3	1	1	THT	
O		STK-BS1B	O		±15	100~600	300~900	4	4	70~150	2~4	1	2	THT	
O		STK-BS1L	O		±15	100~600	300~900	4	4	70~150	2~4	1	2	THT	
O		STK-BS/T	O		±12~±15	200~1500	600~2500	4	4.9	25	5	1	1	Clamping	
O		STK-BS/X	O		±12~±15	500~2500	1500~5500	4	4	25	5	1	1	Clamping	
O		STK-BS/X2	O		±15	3000~6000	4500~12000	4	5.6	1	0.2ms	1	1	Clamping	
O		STK-BS/X4	O		±12~±15	500~2500	1500~5500	4	5	25	5	1	1	Clamping	
O		STK-BS/X5	O		±12~±15	500~2500	1500~5500	4	4	25	5	1	1	Clamping	
O		STK-BS/X6	O		±12~±15	500~2500	1500~5500	4	5	25	5	1	1	Clamping	
O		STK-BS/X7	O		±12~±15	1200~3000	3600~5500	4	5	25	5	1	1	Clamping	



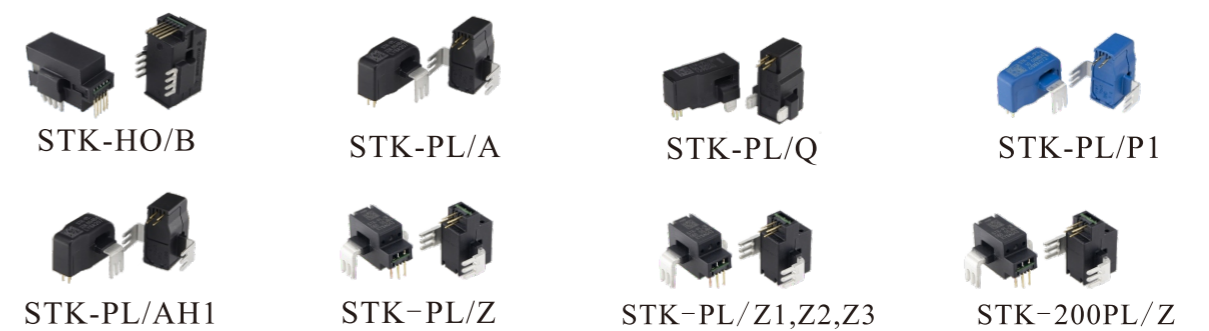
◎ Variable frequency drives

Technology		Type	Out		Vcc (V)	I <sub>pn</sub> (A)	I <sub>pm</sub> (A)	U <sub>ESD</sub> (kV)	U <sub>d</sub> (kV)	BW (kHz)	t <sub>r</sub> (μs)	X@IPN TA=25°C (%FS)	X_Trange (%FS)	Connction	Application
Open-loop	Closed-loop		Voltage	Current											
O		STB-LF	O		±12~±15	100~200	200~420	4	4	100	0.5	0.3	0.2	Clamping	Variable frequency drive
O		STB-LF2	O		±12~±15	200~300	500~600	4	5	100	1	0.3	0.3	Clamping	
O		STB-LF/2	O		±15~±18	500	800	4	4.95	100	0.5	0.4	0.4	Clamping	
O		STB-LF/3	O		±15	366	950	4	3	100	1	0.42	0.42	Clamping	
O		STB-LF4	O		±12~±20	300	500	4	3.8	100	1	0.5	0.5	Clamping	
O		STB-LF4-A	O		±24	300	860	4	3.8	100	1	0.47	0.47	Clamping	
O		STB-LF4-B	O		±12~±20	300	500	4	3.8	100	1	0.47	0.47	Clamping	
O		STB-LF5	O		±15~±24	500	800	4	3.8	200	0.5	0.5	0.6	Clamping	
O		STB-LF5-A	O		±15~±24	500	800	4	4	200	1	0.6	0.6	Clamping	
O		STB-LF5-B	O		±15~±24	500	800	4	4	200	1	0.6	0.6	Clamping	
O		STB-LF5-S	O		±24	622	1700	4	3	100	1	0.6	0.6	Clamping	
O		STB-LF6	O		±15~±24	1000	1500	4	3.8	200	0.5	0.4	0.4	Clamping	
O		STB-LF7	O		±15	180	540	4	2.5	100	1	1.2	1.2	Clamping	
O		STB-LF8	O		±15	88	240	4	2.5	100	1	1.2	1.2	Clamping	
O		STB-LF9	O		±15~±20	300	700	3	3	100	1	0.3	0.36	Clamping	



◎ Variable frequency drives /

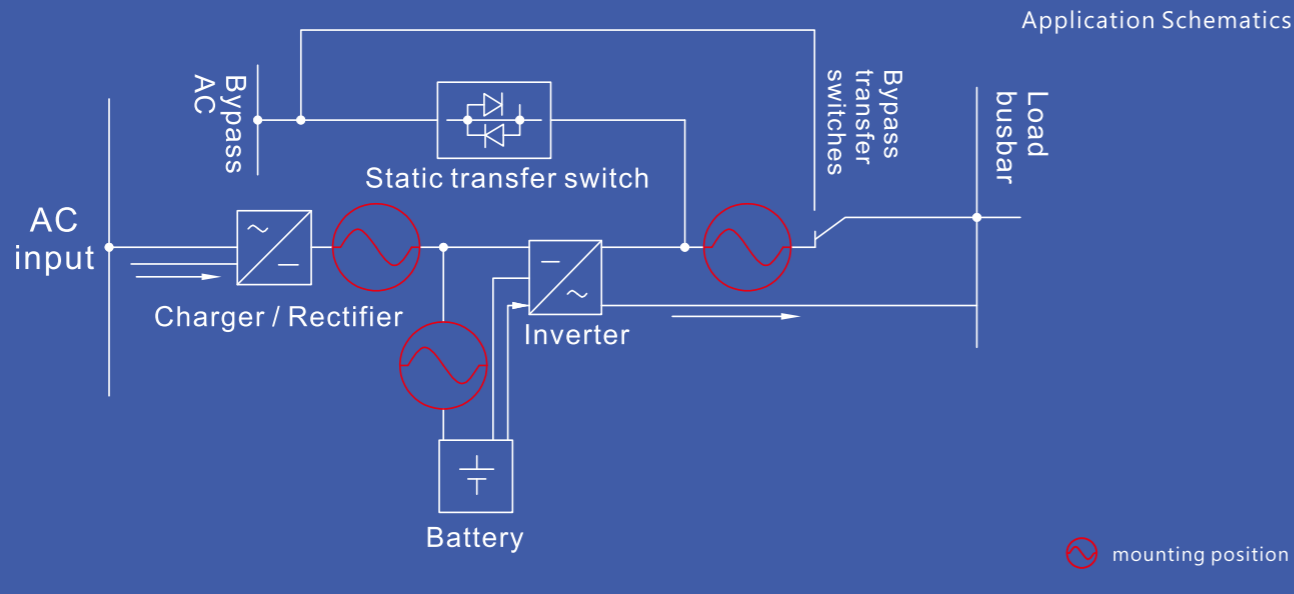
Technology		Type	Out		Vcc (V)	I <sub>pn</sub> (A)	I <sub>pm</sub> (A)	U <sub>ESD</sub> (kV)	U <sub>d</sub> (kV)	BW (kHz)	t <sub>r</sub> (μs)	X@IPN TA=25°C (%FS)	X_Trange (%FS)	Connction	Application
Open-loop	Closed-loop		Voltage	Current											
O		STK-HO/B	O		5	50~180	125~350	4	4	1000	0.2	1	3	THT	Variable frequency drive
O		STK-PL/A	O		5	10~50	25~125	5	4	400	1.5	1	2	THT	
O		STK-PL/Q	O		5	50	50	5	4	300	1.5	1.5	3	THT	
O		STK-PL/P1	O		3.3	10~50	30~150	5	4	400	1.5	1	2	THT	
O		STK-PL/AH1	O		5	10~50	25~125	5	4	400	1.5	1	2	THT	
O		STK-PL/Z	O		3.3, 5	50~180	125~450	4	5	400	1.5	1	2	THT	
O		STK-50PL/Z1	O		5	50	150	4	5	400	1.5	1	3	THT	
O		STK-100PL/Z2	O		5	100	200	4	5	400	1.5	1	3	THT	
O		STK-50PL/Z3	O		3.3	50	150	4	5	400	1.5	1	3	THT	
O		STK-200PL/Z	O		5	200	500	4	5	300	1.5	1	2	THT	



# 04



- High precision
- Wide frequency bandwidth
- Fast response time
- Wide detection range

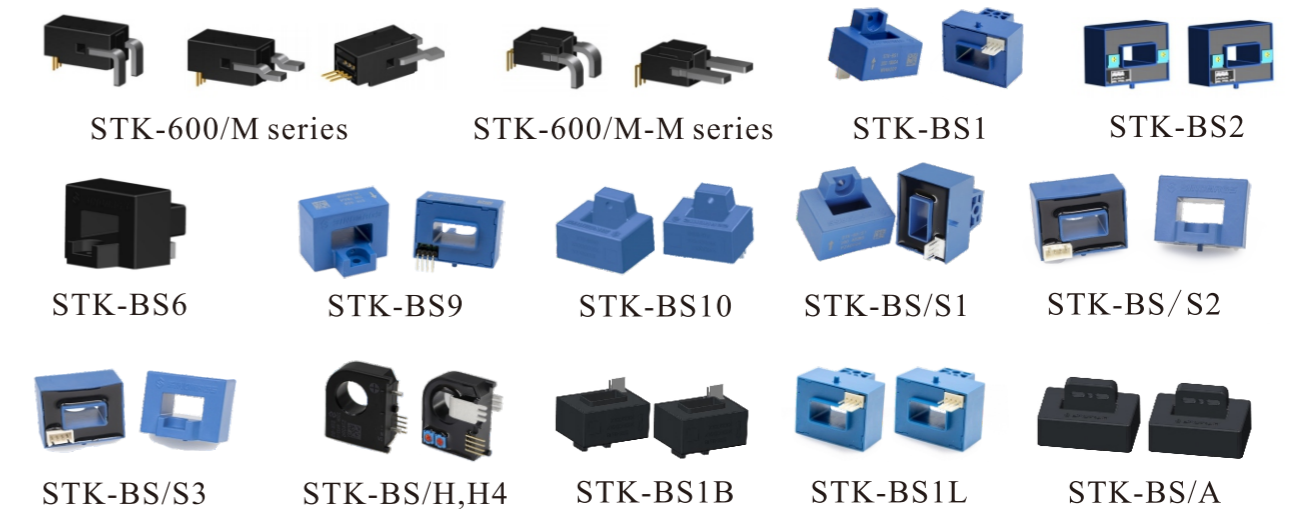


## ◎ UPS(Uninterruptible Power Supply)

Technology	Type	Out			Vcc (V)	I <sub>pn</sub> (A)	I <sub>pm</sub> (A)	UESD (kV)	Ud (kV)	BW (kHz)	t <sub>r</sub> (μs)	X@IPN TA=25°C (%FS)	X_Trange (%FS)	Connction	Application
		Voltage	Digital	Current											
O	STK-HD/P	O		5, 3.3	5 ~ 30	12.5 ~ 75	4	4	600	1	1	3	THT	Uninterruptible Power Supply (UPS)	
O	STK-HD/S	O		5	3 ~ 10	7.5 ~ 25	4	4	800	0.4	0.8	1.5	THT		
O	STK-HD/C	O		5	20 ~ 40	NA	4	4	400	1	1	3	THT		
O	STK-HD/K	O		5	20 ~ 50	50 ~ 100	4	4	600	1	0.8	1.5	THT		
O	STK-HD/KA	O		5	20 ~ 50	50 ~ 100	4	4	600	1	0.8	1.5	THT		
O	STK-HD/KS	O		3.3	20 ~ 50	50 ~ 100	4	4	600	1	0.8	1.5	THT		
O	STK-HD/P1/x	O		5	20 ~ 30	20 ~ 50	4	4	600	1	1	3	THT		
O	STK-HD/P3	O		5	20	20	4	4	600	1	1	3	THT		
O	STK-HD/P4	O		5	20	50	4	4	600	1	1	3	THT		
O	STK-HD/SG	O		5	15	NA	4	4	600	0.4	0.8	1.5	THT		
O	STK-HD/P/G	O		5	5 ~ 30	12.5 ~ 75	4	4	1000	0.5	1	3	THT		
O	STK-PL/A	O		5	10 ~ 50	25 ~ 125	5	4	400	1.5	1	2	THT		
O	STK-PL/Q	O		5	50	50	5	4	300	1.5	1.5	3	THT		
O	STK-PL/P1	O		3.3	10 ~ 50	30 ~ 150	5	4	400	1.5	1	2	THT		
O	STK-PL/AH1	O		5	10 ~ 50	25 ~ 125	5	4	400	1.5	1	2	THT		
O	STK-PL/Z	O		3.3, 5	50 ~ 180	125 ~ 450	4	5	400	1.5	1	2	THT		
O	STK-50PL/Z1	O		5	50	150	4	5	400	1.5	1	3	THT		
O	STK-100PL/Z2	O		5	100	200	4	5	400	1.5	1	3	THT		
O	STK-50PL/Z3	O		3.3	50	150	4	5	400	1.5	1	3	THT		
O	STK-200PL/Z	O		5	200	500	4	5	300	1.5	1	2	THT		

## ◎ UPS(Uninterruptible Power Supply)

Technology	Type	Out			Vcc (V)	I <sub>pn</sub> (A)	I <sub>pm</sub> (A)	UESD (kV)	Ud (kV)	BW (kHz)	t <sub>r</sub> (μs)	X@IPN TA=25°C (%FS)	X_Trange (%FS)	Connction	Application
		Voltage	Digital	Current											
O	STK-600/M-MPPF&MPSF	O		5, 3.3	50, 100	50 ~ 250	4	4	120	4.6	2.4	3.5	THT	Uninterruptible Power Supply (UPS)	
O	STK-600/M-PFF&PSF&PSS	O		5, 3.3	50, 100	50 ~ 400	4	4	120	4.6	2.4	3.5	THT		
O	STK-BS1	O		±15	100 ~ 600	300 ~ 900	4	4	50 ~ 150	2 ~ 7	1	2	THT		
O	STK-BS2	O		±15	500	900	4	4	50	5	1	1	THT		
O	STK-BS6	O		±15	50 ~ 600	150 ~ 900	4	4	50	5	1	1	THT		
O	STK-BS9	O		±15	50 ~ 600	150 ~ 900	4	4	50 ~ 150	3	1	2	THT		
O	STK-BS10	O		±15	100 ~ 600	300 ~ 900	4	4	50 ~ 150	2 ~ 4	1	2	THT		
O	STK-BS/S1	O		5	50 ~ 600	150 ~ 1100	4	3.3	60	3.5	1	3.5	THT		
O	STK-BS/S2	O		5	50 ~ 600	150 ~ 1100	4	3.3	60	3.5	1	3.5	THT		
O	STK-BS/S3	O		5	50 ~ 600	150 ~ 1100	4	3.3	250	3.5	1	3.5	THT		
O	STK-BS/H	O		±15	50 ~ 400	150 ~ 600	4	2.5	50	3	1	3	THT		
O	STK-BS/H4	O		15	50 ~ 100	150 ~ 450	4	2.5	50	3	1	2	THT		
O	STK-BS/A	O		±12 ~ ±15	300 ~ 1000	900 ~ 3000	4	5	25	3	1	1	THT		
O	STK-BS1B	O		±15	100 ~ 600	300 ~ 900	4	4	70 ~ 150	2 ~ 4	1	2	THT		
O	STK-BS1L	O		±15	100 ~ 600	300 ~ 900	4	4	70 ~ 150	2 ~ 4	1	2	THT		
O	STK-BS/T	O		±12 ~ ±15	200 ~ 1500	600 ~ 2500	4	4.9	25	5	1	1	Clamping		
O	STK-BS/T5	O		±15	163 ~ 2184	500 ~ 2500	4	4.9	25	5	1	1	Clamping		
O	STK-BS/X	O		±12 ~ ±15	500 ~ 2500	1500 ~ 5500	4	4	25	5	1	1	Clamping		
O	STK-BS/X2	O		±15	3000 ~ 6000	4500 ~ 12000	4	5.6	1	0.2	1	1	Clamping		
O	STK-BS/X4	O		±12 ~ ±15	500 ~ 2500	1500 ~ 5500	4	5	25	5	1	1	Clamping		
O	STK-BS/X5	O		±12 ~ ±15	500 ~ 2500	1500 ~ 5500	4	4	25	5	1	1	Clamping		
O	STK-BS/X6	O		±12 ~ ±15	500 ~ 2500	1500 ~ 5500	4	5	25	5	1	1	Clamping		
O	STK-BS/X7	O		±12 ~ ±15	1200 ~ 3000	3600 ~ 5500	4	5	25	5	1	1	Clamping		





◎ UPS(Uninterruptible Power Supply)

Technology		Type	Out		Vcc (V)	I <sub>pn</sub> (A)	I <sub>pm</sub> (A)	UESD (kV)	Ud (kV)	BW (kHz)	t <sub>r</sub> (μs)	X@IPN TA=25°C (%FS)	X_Trange (%FS)	Connction	Application
Open-loop	Closed-loop Fluxgate		Voltage	Current											
O		STK-HO	O		5	60~150	150~375	4	4	200	2	1.5	3	THT	Uninterruptible Power Supply (UPS)
O		STK-HO/2	O		5	60~250	150~625	4	4.3	200	1.5	1	3	THT	
O		STK-HO/4	O		5	50~250	125~625	4	4.3	200	1.5	1	3	THT	
O		STK-HO/1	O		5	100~200	300~600	4	4.3	200	2	1	3	THT	
O		STK-HO/P	O		5	50~400	150~600	4	4.3	50	5	1	3	THT	
O		STK-HO/B	O		5	50~180	125~350	4	4	1000	0.2	1	3	THT	
O		STK-200HO/YS	O		5	±200	1250	4	5.4	180	3	3.3	4	THT	
O		STK-500HO/YS	O		5	±500	1250	4	5.4	180	3	3.3	4	THT	
O		STB-CAS/x	O		5	15~75	51~220	4	5	400	0.3	0.8	2.5	THT	
O	O	STB-CAS/F	O		5	6~75	20~220	4	5	400	0.3	0.8	1.4	THT	
O	O	STB-CAS/FA	O		5	6~75	20~220	4	4	400	0.3	0.8	1.1	THT	
O	O	STB-CAS/K-FC	O		5	25~50	85~150	4	4	400	0.3	0.8	1.1	THT	
O		STB-CAS/RH	O		5	25	85	4	4	400	0.3	0.8	1.15	THT	
O		STB-CAS/FB	O		5	25	50.1	4	8	200	1	0.5	0.5	THT	



◎ UPS(Uninterruptible Power Supply)

Technology		Type	Out		Vcc (V)	I <sub>pn</sub> (A)	I <sub>pm</sub> (A)	UESD (kV)	Ud (kV)	BW (kHz)	t <sub>r</sub> (μs)	X@IPN TA=25°C (%FS)	X_Trange (%FS)	Connction	Application
Open-loop	Closed-loop Fluxgate		Voltage	Current											
O		STB-HA	O		±15	3~40	9~120	4	4	150	1.5	0.8	0.8	THT	Uninterruptible Power Supply (UPS)
O		STB-HA/A	O		±15	10~60	30~180	4	4	150	1.5	0.8	0.8	THT	
O		STB-HA/Y	O		±15	50	150	4	4	150	1.5	0.8	0.8	THT	
O		STB-25HA1	O		±15	25	75	4	NA	150	1.5	1.5	1.5	THT	
O		STB-50HA7	O		±15	50	150	4	NA	150	1.5	1.5	1.5	THT	
O		STB-LA		O	±12~±15	50~150	200~240	4	4	150	0.5	0.5	0.5	THT	
O		STB-LA/N1		O	±12~±15	25~100	55~200	4	4	150	0.5	NA	0.5	THT	
O		STB-LA/A		O	5	25	25	4	4	200	0.3	10	10	THT	
O	O	STB-LA/B		O	±12 or ±15	100	188, 236	NA	1.8	200	1	0.1	0.1	THT	
O		STB-LA/D		O	±12~±15	25~100	55~175	4	4	150	0.5	0.5	1.5	THT	
O	O	STB-LA/DF		O	±12~±15	25~100	55~175	4	5	150	0.5	0.5	NA	THT	
O		STB-50LA/DH		O	±12~±15	50	128	4	4	150	0.5	0.3	0.3	THT	
O	O	STB-LA/E		O	±15	200	NA	NA	3	100	1	0.5	0.6	THT	
O	O	STB-LA/F		O	±15	230	425, 220	NA	3	100	1	0.5	0.5	THT	
O		STB-LA/S		O	5	100	220	4	4	300	0.5	0.8	1.1	THT	
O	O	STB-LA/SF		O	5	100	200	4	4	100	1	0.7	0.7	THT	
O		STB-LA/M		O	5	300	600	4	4	300	0.6	0.8	1.1	THT	
O		STB-300LA/M		O	5	300	600	4	4	300	0.6	0.8	1.1	THT	
O		STB-LA/AM3		O	12	50	50	4	4	100	/	10	10	THT	
O		STB-250LA/ZR		O	5	250	380, 450	4	4	200	3	1	1.4	THT	
O		STB-LA/Zx		O	5	100~200	300~450	4	4	300	0.3	0.8	1.1	THT	
O		STB-250LA/Zx		O	5	250	450	4	4	200	3	1	1.4	THT	
O		STK-LBS/6G		O	5	100~1000	100~1000	4	0.5	250	3	1	3.5	DIP	Uninterruptible Power Supply (UPS)
O		STK-LBS/S		O	3.3	200	200	4	1	250	3	1	2	SMT	
O		STK-LBS/S2		O	5	400~1500	400~1500	4	1	250	3	1.5	3.5	SMT	

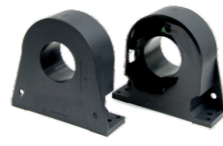


◎ UPS(Uninterruptible Power Supply)

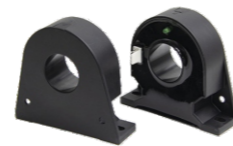
Technology			Out	Vcc (V)	I <sub>pn</sub> (A)	I <sub>pm</sub> (A)	UESD (kV)	Ud (kV)	BW (kHz)	t <sub>r</sub> (μs)	X@IPN TA=25°C (%FS)	X_Trance (%FS)	Connction	Application
Open-loop	Closed-loop	Fluxgate												
O				±12 ~ ±15	100 ~ 200	200 ~ 420	4	4	100	0.5	0.3	0.2	Clamping	Uninterruptible Power Supply (UPS)
O				±12 ~ ±15	200 ~ 300	500 ~ 600	4	5	100	1	0.3	0.3	Clamping	
O				±15 ~ ±18	500	800	4	4.95	100	0.5	0.4	0.4	Clamping	
O				±15	366	950	4	3	100	1	0.42	0.42	Clamping	
O				±12 ~ ±20	300	500	4	3.8	100	1	0.5	0.5	Clamping	
O				±24	300	860	4	3.8	100	1	0.47	0.47	Clamping	
O				±12 ~ ±20	300	500	4	3.8	100	1	0.47	0.47	Clamping	
O				±15 ~ ±24	500	800	4	3.8	200	0.5	0.5	0.6	Clamping	
O				±15 ~ ±24	500	800	4	4	200	1	0.6	0.6	Clamping	
O				±15 ~ ±24	500	800	4	4	200	1	0.6	0.6	Clamping	
O				±24	622	1700	4	3	100	1	0.6	0.6	Clamping	
O				±15 ~ ±24	1000	1500	4	3.8	200	0.5	0.4	0.4	Clamping	
O				±15	180	540	4	2.5	100	1	1.2	1.2	Clamping	
O				±15	88	240	4	2.5	100	1	1.2	1.2	Clamping	
O				±15 ~ ±20	300	700	3	3	100	1	0.3	0.36	Clamping	



STB-LF



STB-LF2



STB-LF/2



STB-LF/3



STB-LF4



STB-LF4-A



STB-LF4-B



STB-LF5



STB-LF5-B



STB-LF5-A



STB-LF5-S



STB-LF6



STB-LF7



STB-LF8

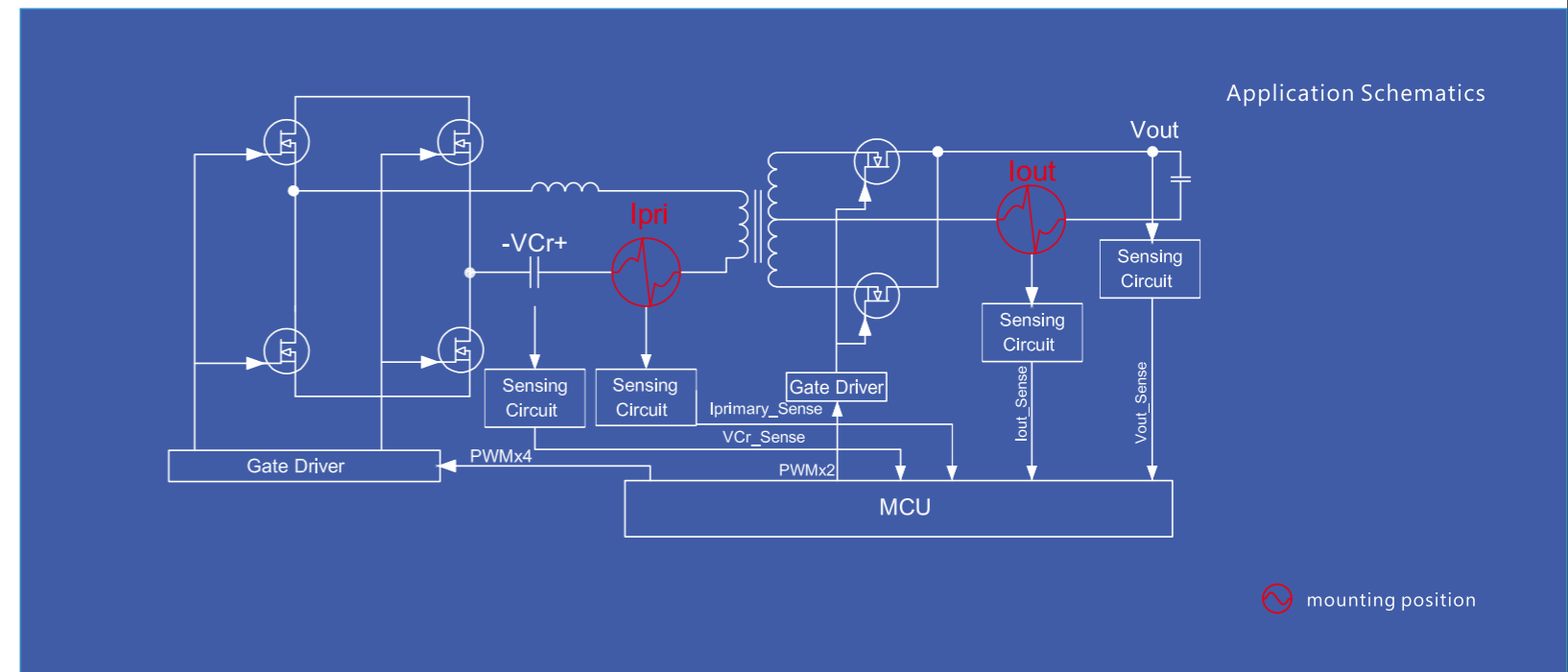


STB-LF9



05

HFCT APPLICATION



Application Schematics

mounting position

## ◎ Product Core Overview

在高频电力电子技术爆发的当下，传统电流传感器在带宽、响应速度或体积上的局限，已难以匹配高频电力电子设备、精密测试仪器等场景的核心诉求。

在此背景下，希磁科技重磅推出高频电流传感器系列产品，该系列产品搭载 TMR 核心技术，1~10 MHz 带宽 + 40ns ~ 200 ns 极速频响，精准捕捉高频脉冲电流。±1000A 宽量程覆盖多元场景，传承 ±1% 高精度，稳定可靠。

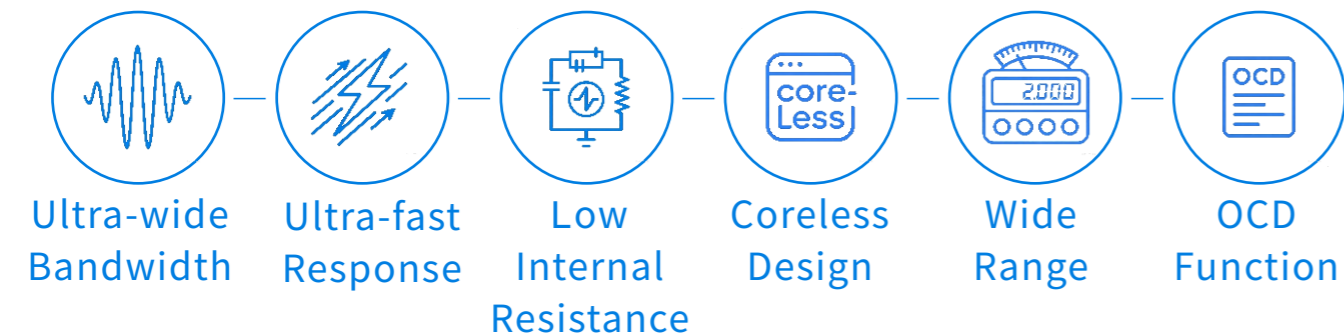
该系列产品以TMR高频技术方案打破行业局限，用宽带宽、极速响应、大量程覆盖助力设备升级，为各行业客户提供更高效、精准、可靠的电流测量解决方案，助力产业向高频化、精密化、小型化方向稳步前行！

Against the explosive development of high-frequency power electronics technology, traditional current sensors are constrained by limitations in bandwidth, response speed and size, making them unable to meet the core requirements of high-frequency power electronic equipment, precision test instruments and other application scenarios.

Against this backdrop, Sinomags officially launches its high-frequency current sensor series. Adopting core TMR technology, the series features a bandwidth of 1~10 MHz and an ultra-fast response time of 40ns ~ 200 ns, enabling accurate capture of high-frequency pulse current. It supports a wide measurement range up to ~1000A to cover diverse scenarios, while inheriting the high precision of ±1% with outstanding stability and reliability.

Breaking industry bottlenecks with the TMR high-frequency technical solution, this product series empowers equipment upgrading via wide bandwidth, ultra-fast response and extensive measuring range. It provides customers across industries with more efficient, precise and reliable current measurement solutions, boosting the steady advancement of the industry toward high frequency, high precision and miniaturization.

## ◎ Core Performance Highlights



## ◎ Electrical Parameters of Chip-Level Current Sensor

Technology	Picture 产品图	Partnumber 型号	Out		Supply Voltage 供电电压	Nominal Current 额定电流	Current detection range 最大电流范围	ESD rating (HBM) 静电耐压	RMS voltage for AC test 50Hz/1 min 隔离耐压	Frequency Bandwidth -3 dB 带宽	Step response time 阶跃响应时间	Accuracy Error 精度误差@25°C	Accuracy Error 精度误差	Primary conductor resistance内阻	OCD Function OCD功能	PRODUCT PACKAGE 产品封装	Connection 安装方式
			Voltage	Current													
○		STK-636TMF	○		5, 3.3	±20 ~ ±65	±20 ~ ±65	4	5	10	40	1.5	3.5	0.85	YES	SOIC16 Like 10.3*10.3 mm	SMT
○		STK-626C	○		5, 3.3	±50 ~ ±300	±50 ~ ±300	4	5	1	200	1.5	3.5	0.1	YES	Silicon Microphone	SMT
○		STK-616AMF1	○		5, 3.3	±50 ~ ±200	±50 ~ ±200	4	4.8	1.5	200	1.5	3.5	0.27	YES	SOIC10Like 10.9*12.7mm	SMT
○		STK-626DMF	○		5, 3.3	±20 ~ ±65	±20 ~ ±65	4	3.6	2	80	1.5	3.5	0.9	YES	SOIC16 Like 10.3*10.3 mm	SMT
○		STK-616CMF1	○		5, 3.3	±50 ~ ±300	±50 ~ ±300	4	5	2	80	1.5	3.5	0.1	YES	TO263-7 Like 15*10 mm	SMT
○		STK-616TMW	○		5, 3.3	±10 ~ ±133	±10 ~ ±133	4	3.6	1	200	1.5	3.5	0.85	YES	SOIC16 Like 10.3*10.3 mm	SMT
○		STK-616TMF	○		5, 3.3	±10 ~ ±133	±10 ~ ±133	4	3.6	1.5	200	1.5	3.5	0.85	YES	SOIC16 Like 10.3*10.3 mm	SMT
○		STK-616KMF	○		5, 3.3	±30 ~ ±65	±30 ~ ±65	4	3.6	1.5	200	1.5	3.5	0.85	YES	SOIC16 Like 10.3*10.3 mm	SMT
○		STK-616ZMF	○		5, 3.3	±10 ~ ±65	±10 ~ ±65	2	3.6	2	50	1.5	3.5	0.9	NO	SOIC8 Like 4.9*6.0 mm	SMT

## ◎ APPLICATION



## Electrical Parameters of Module-Level Current Sensor

Technology	Picture 产品图	Partnumber 型号	Out	Digital Current Voltage	Supply Voltage 供电电压	Nominal Current 额定电流	Current detection range 最大电流范围	ESD rating (HBM) 静电耐压	RMS voltage for AC test 50Hz/1 min 隔离耐压	-3 dB Bandwidth 频率带宽	Step response time 阶跃响应时间	Accuracy Error 精度误差@25°C	Accuracy Error 精度误差	Primary conductor resistance内阻	OCD Function OCD功能	PRODUCT PACKAGE 产品封装	Connection 安装方式
					V <sub>cc</sub> (V)	I <sub>pn</sub> (A)	I <sub>pm</sub> (A)	U <sub>ESD</sub> (kV)	U <sub>a</sub> (kV)	f <sub>band</sub> (MHz)	t <sub>r</sub> (ns)	Acc (%FS)	Acc (%FS)	R <sub>pr</sub> (mΩ)			
○		STK-H-PL	○		5, 3.3	±20 ~ ±50	±50 ~ ±125	4	4	2	100	1	1.5	NA	NO	NA	THT
○		STK-H-HD/K	○		5, 3.3	±20 ~ ±50	±60 ~ ±150	4	4	2	100	1	1.5	NA	NO	NA	THT
○		STK-H-HO	○		5	±50 ~ ±200	±125 ~ ±300	4	4	1	200	1.5	4	NA	NO	NA	THT
○		STK-H-BS/S	○		5	±100 ~ ±1000	±100 ~ ±1000	4	4	1	200	1	3	NA	NO	NA	Bolt fastening
○		STB-H-CAS/K	○		5	±50	±205	4	4	1	300	0.8	2.5	NA	NO	NA	THT
○		STB-H-200LA/ZN	○		5	±200	±450	4	4	1	300	0.8	1.4	NA	NO	NA	THT
○		STB-H-300LA/M	○		5	±300	±600	4	4	1	300	0.8	1.1	NA	NO	NA	THT

## APPLICATION



High-Frequency Switching Power Supply



AC Variable Frequency Drive



Energy Storage System



Photovoltaic Inverter

# 06

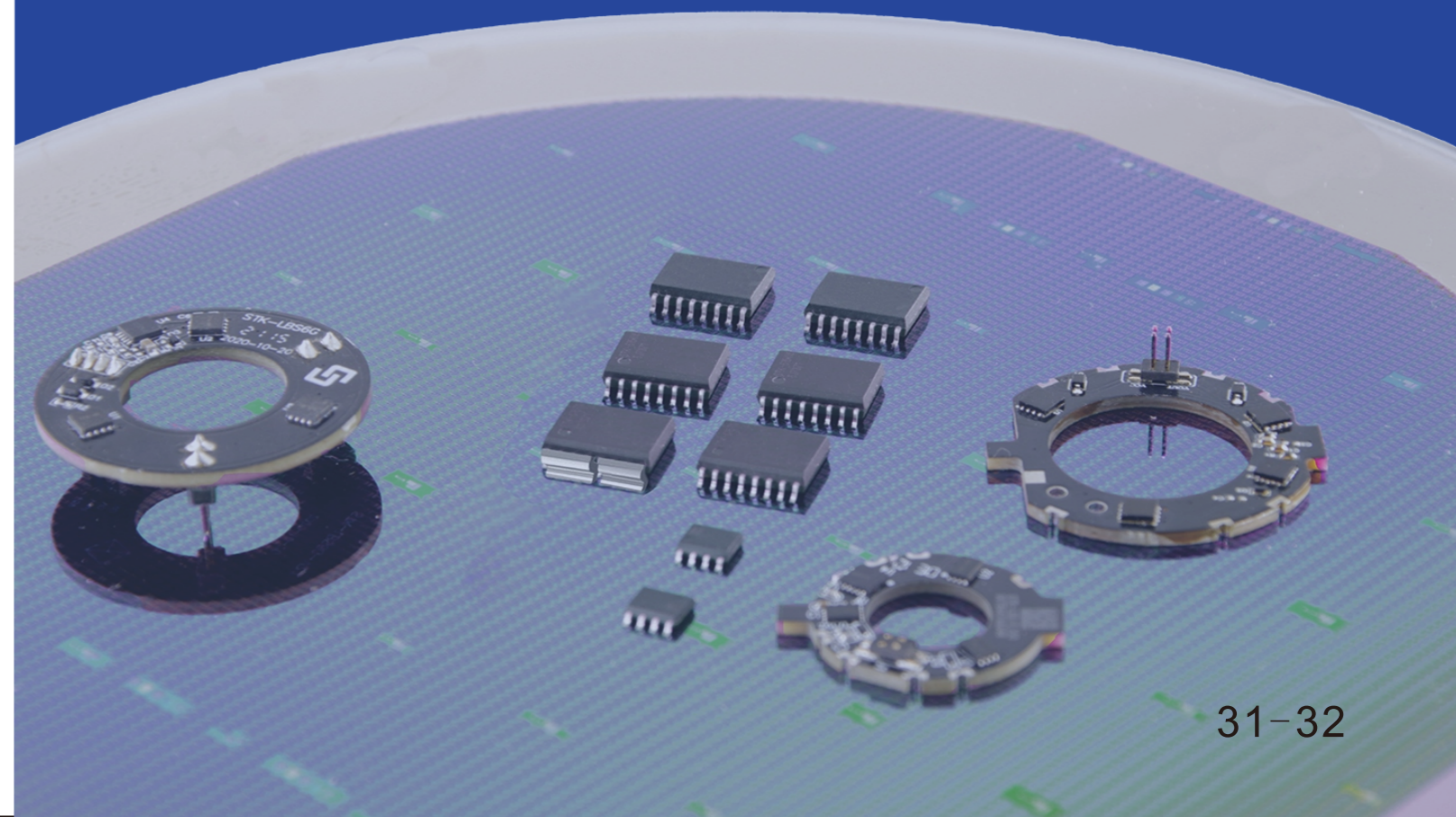
## CORELESS SOLUTION

### Features

- Frequency bandwidth of up to ~10MHz
- Response time of down to ~40 ns
- Open loop design
- Coreless design enables the small dimensions
- Differential magnetic field detection design supports the common-mode field rejection.
- OCD (over current detection) function available
- Support supply voltage of 3.3 V or 5.0 V

### Application

- Solar energy
- Motor driver
- Uninterruptible power supply
- Switching Mode Power supply
- EV charger
- EV OBC
- EV DC/DC



◎ Coreless Solution

Type	Partnumber	Normal Current	Supply Voltage	Sensitivity	Frequency Bandwidth -3dB	Step Response time	Clearance	X_Trage (%FS)
		I <sub>pn</sub> (A)	V <sub>cc</sub> (A)	Gain (mV/A, mA/A)	f <sub>band</sub> (kHz)	t <sub>r</sub> (us)	d <sub>CI</sub> (mm)	Acc (%FS)
STK-LBS/S	STK-200LBS/S	±200	3.3	6	250	3	1	2
STK-LBS/S2	STK-400LBS/S2	±400	5	5	250	3	1	3.5
	STK-500LBS/S2	±500	5	4	250	3	1	3.5
	STK-600LBS/S2	±600	5	3.33	250	3	1	3.5
	STK-800LBS/S2	±800	5	2.5	250	3	1	3.5
	STK-1000LBS/S2	±1000	5	2	250	3	1	3.5
	STK-1500LBS/S2	±1500	5	1.33	250	3	1	3.5
STK-LBS/6G	STK-100LBS/6G	±100	5	20	250	3	0.5	3.5
	STK-200LBS/6G	±200	5	10	250	3	0.5	3.5
	STK-300LBS/6G	±300	5	6.66	250	3	0.5	3.5
	STK-400LBS/6G	±400	5	5	250	3	0.5	3.5
	STK-500LBS/6G	±500	5	4	250	3	0.5	3.5
	STK-600LBS/6G	±600	5	3.33	250	3	0.5	3.5
	STK-700LBS/6G	±700	5	2.85	250	3	0.5	3.5
	STK-800LBS/6G	±800	5	2.5	250	3	0.5	3.5
	STK-900LBS/6G	±900	5	2.22	250	3	0.5	3.5
STK-1000LBS/6G	±1000	5	2	250	3	0.5	3.5	



STK-LBS/S



STK-LBS/S2



STK-LBS/6G

◎ Coreless Solution

Type	Partnumber	Normal Current	Supply Voltage	Sensitivity	Frequency Bandwidth -3dB	Step Response time	Clearance	OCF Function	Trigger Delay	Trigger Holding	X_Trage (%FS)	PRODUCT PACKAGE
		I <sub>pn</sub> (A)	V <sub>cc</sub> (V)	Gain (mV/A, mA/A)	f <sub>band</sub> (kHz)	t <sub>r</sub> (us)	d <sub>CI</sub> (mm)	OCF	t <sub>mask</sub> (us)	t <sub>hold</sub> (ms)	Acc (%FS)	
STK-616AM	STK-616A-25MLB5	±25	5	48	600	0.9	8.5	YES	0-3	0-4.5	3.5	SOIC10 Like 10.9 × 12.7 mm
	STK-616A-50MLB5	±50	5	24	600	0.9	8.5	YES	0-3	0-4.5	3.5	
	STK-616A-60MLB5	±60	5	20	600	0.9	8.5	YES	0-3	0-4.5	3.5	
	STK-616A-80MLB5	±80	5	15	600	0.9	8.5	YES	0-3	0-4.5	3.5	
	STK-616A-100MLB5	±100	5	12	600	0.9	8.5	YES	0-3	0-4.5	3.5	
STK-616AM3	STK-616A-50ML3B5	±50	5	40	600	0.9	8.5	YES	0-3	0-4.5	3.5	SOIC10 Like 10.9 × 12.7 mm
	STK-616A-50ML3B3	±50	3.3	26.4	600	0.9	8.5	YES	0-3	0-4.5	3.5	
	STK-616A-50ML3U5	50	5	80	600	0.9	8.5	YES	0-3	0-4.5	3.5	
	STK-616A-66ML3B5	±66	5	30	600	0.9	8.5	YES	0-3	0-4.5	3.5	
	STK-616A-75ML3B5	±75	5	26.6	600	0.9	8.5	YES	0-3	0-4.5	3.5	
	STK-616A-80ML3B5	±80	5	25	600	0.9	8.5	YES	0-3	0-4.5	3.5	
	STK-616A-90ML3B5	±90	5	22.2	600	0.9	8.5	YES	0-3	0-4.5	3.5	
	STK-616A-95ML3U5	95	5	42.1	600	0.9	8.5	YES	0-3	0-4.5	3.5	
	STK-616A-100ML3U5	100	5	20	600	0.9	8.5	YES	0-3	0-4.5	3.5	
	STK-616A-100ML3B5	±100	5	40	600	0.9	8.5	YES	0-3	0-4.5	3.5	
	STK-616A-120ML3B5	±120	5	16.5	600	0.9	8.5	YES	0-3	0-4.5	3.5	
STK-616A-150ML3B5	±150	5	13.3	600	0.9	8.5	YES	0-3	0-4.5	3.5		
STK-616A-180ML3B5	±180	5	11.1	600	0.9	8.5	YES	0-3	0-4.5	3.5		
STK-616AM5	STK-616A-25ML5B5	±25	5	80	600	0.9	8.5	YES	0-3	0-4.5	3.5	SOIC10 Like 10.9 × 12.7 mm
	STK-616A-50ML5B5	±50	5	40	600	0.9	8.5	YES	0-3	0-4.5	3.5	
	STK-616A-60ML5B5	±60	5	33.3	600	0.9	8.5	YES	0-3	0-4.5	3.5	
	STK-616A-80ML5B5	±80	5	25	600	0.9	8.5	YES	0-3	0-4.5	3.5	
	STK-616A-100ML5B5	±100	5	20	600	0.9	8.5	YES	0-3	0-4.5	3.5	
	STK-616A-120ML5B5	±120	5	15	600	0.9	8.5	YES	0-3	0-4.5	3.5	
STK-616A-200ML5B5	±200	5	10	600	0.9	8.5	YES	0-3	0-4.5	3.5		

◎ Coreless Solution

Type	Partnumber	Normal Current	Supply Voltage	Sensitivity	Frequency Bandwidth -3dB	Step Response time	Clearance	OCF Function	Trigger Delay	Trigger Holding	X_Trage (%FS)	PRODUCT PACKAGE
		I <sub>pn</sub> (A)	V <sub>cc</sub> (V)	Gain (mV/A, mA/A)	f <sub>band</sub> (kHz)	t <sub>r</sub> (us)	d <sub>CI</sub> (mm)	OCF	t <sub>mask</sub> (us)	t <sub>hold</sub> (ms)	Acc (%FS)	
STK-616AM5	STK-616A-25ML5B3	±25	3.3	52.8	600	0.9	8.5	YES	0-3	0-4.5	3.5	SOIC10 Like 10.9 × 12.7 mm
	STK-616A-50ML5B3	±50	3.3	26.4	600	0.9	8.5	YES	0-3	0-4.5	3.5	
	STK-616A-55ML5B3	±55	3.3	24	600	0.9	8.5	YES	0-3	0-4.5	3.5	
	STK-616A-60ML5B3	±60	3.3	33.3	600	0.9	8.5	YES	0-3	0-4.5	3.5	
	STK-616A-80ML5B3	±80	3.3	16.5	600	0.9	8.5	YES	0-3	0-4.5	3.5	
	STK-616A-100ML5B3	±100	3.3	13.2	600	0.9	8.5	YES	0-3	0-4.5	3.5	
	STK-616A-50ML5U5	50	5	80	600	0.9	8.5	YES	0-3	0-4.5	3.5	
	STK-616A-80ML5U5	80	5	80	600	0.9	8.5	YES	0-3	0-4.5	3.5	
STK-616AM8	STK-616A-100ML5U3	100	3.3	26.4	600	0.9	8.5	YES	0-3	0-4.5	3.5	SOIC10 Like 10.9 × 12.7 mm
	STK-616A-50ML8B5	±50	5	40	600	0.9	8.5	YES	0-3	0-4.5	3.5	
	STK-616A-80ML8B5	±50	5	25	600	0.9	8.5	YES	0-3	0-4.5	3.5	
	STK-616A-90ML8B5	±90	5	22.2	600	0.9	8.5	YES	0-3	0-4.5	3.5	
	STK-616A-100ML8B5	±100	5	20	600	0.9	8.5	YES	0-3	0-4.5	3.5	
	STK-616A-133ML8B5	±133	5	15	600	0.9	8.5	YES	0-3	0-4.5	3.5	
	STK-616A-50ML8B3	±50	3.3	26.4	600	0.9	8.5	YES	0-3	0-4.5	3.5	
STK-616BML	STK-616B-6.5MLB5	±6.5	5	200	600	0.9	8	YES	0-3	0-4.5	3.5	SOIC16W Like 10.3 × 10.3 mm
	STK-616B-13MLB5	±13	5	100	600	0.9	8	YES	0-3	0-4.5	3.5	
	STK-616B-15MLB5	±15	5	90	600	0.9	8	YES	0-3	0-4.5	3.5	
	STK-616B-28MLB5	±28	5	48	600	0.9	8	YES	0-3	0-4.5	3.5	
	STK-616B-56MLB5	±56	5	24	600	0.9	8	YES	0-3	0-4.5	3.5	
STK-616B-65MLB5	±65	5	20.5	600	0.9	8	YES	0-3	0-4.5	3.5		
STK-616DML	STK-616D-12MLB3	±12.5	3.3	37	600	0.9	7.5	YES	0-3	0-4.5	3.5	SOIC16W Like 10.3 × 10.3 mm
	STK-616D-20MLB3	±20	3.3	25	600	0.9	7.5	YES	0-3	0-4.5	3.5	
	STK-616D-25MLB3	±25	3.3	18.5	600	0.9	7.5	YES	0-3	0-4.5	3.5	
	STK-616D-6MLB5	±6	5	151	600	0.9	7.5	YES	0-3	0-4.5	3.5	
	STK-616D-12MLB5	±12.5	5	56	600	0.9	7.5	YES	0-3	0-4.5	3.5	
STK-616D-25MLB5	±25	5	28	600	0.9	7.5	YES	0-3	0-4.5	3.5		
STK-616HML	STK-616H-10MLB5	±10	5	80	600	0.9	8	YES	0-3	0-4.5	3.5	SOIC16W Like 10.3 × 10.3 mm
	STK-616H-15MLB5	±15	5	53.33	600	0.9	8	YES	0-3	0-4.5	3.5	
	STK-616H-20MLB5	±20	5	40	600	0.9	8	YES	0-3	0-4.5	3.5	
	STK-616H-30MLB5	±30	5	26.67	600	0.9	8	YES	0-3	0-4.5	3.5	
STK-616KMF	STK-616K-20MFB3	±20	3.3	66	1500	0.2	7.5	YES	0-3	0-4.5	3	SOIC16W Like 10.3 × 10.3 mm
	STK-616K-30MFB5	±30	5	66.6	1500	0.2	7.5	YES	0-3	0-4.5	3	
	STK-616K-40MFB3	±40	3.3	33	1500	0.2	7.5	YES	0-3	0-4.5	3	
	STK-616K-65MFB3	±65	3.3	20.3	1500	0.2	7.5	YES	0-3	0-4.5	3	
STK-616TML	STK-616T-20MLB5	±20	5	100	600	0.9	8	YES	0-3	0-4.5	3.5	SOIC16W Like 10.3 × 10.3 mm
	STK-616T-30MLB5	±30	5	66	600	0.9	8	YES	0-3	0-4.5	3.5	
	STK-616T-40MLB5	±40	5	50	600	0.9	8	YES	0-3	0-4.5	3.5	
	STK-616T-50MLB5	±50	5	40	600	0.9	8	YES	0-3	0-4.5	3.5	
	STK-616T-65MLB5	±65	5	30.8	600	0.9	8	YES	0-3	0-4.5	3.5	
	STK-616T-75MLB5	±75	5	26.7	600	0.9	8	YES	0-3	0-4.5	3.5	
	STK-616T-100MLB5	±100	5	20	600	0.9	8	YES	0-3	0-4.5	3.5	
	STK-616T-133MLB5	±133	5	15	600	0.9	8	YES	0-3	0-4.5	3.5	
	STK-616T-10MLB3	±10	3.3	132	600	0.9	8	YES	0-3	0-4.5	3.5	
	STK-616T-20MLB3	±20	3.3	66	600	0.9	8	YES	0-3	0-4.5	3.5	
	STK-616T-30MLB3	±30	3.3	44	600	0.9	8	YES	0-3	0-4.5	3.5	
STK-616T-33MLB3	±33	3.3	39.6	600	0.9	8	YES	0-3	0-4.5	3.5		
STK-616T-40MLB3	±40	3.3	33	600	0.9	8	YES	0-3	0-4.5	3.5		
STK-616TMF	STK-616T-65MLB3	±65	3.3	20.3	600	0.9	8	YES	0-3	0-4.5	3.5	SOIC16W Like 10.3 × 10.3 mm
	STK-616T-10MFB5	±10	5	200	1500	0.6	8	YES	0-3	0-4.5	3.5	
	STK-616T-20MFB5	±20	5	100	1500	0.6	8	YES	0-3	0-4.5	3.5	
	STK-616T-40MFB5	±40	5	50	1500	0.6	8	YES	0-3	0-4.5	3.5	
	STK-616T-50MFB5	±50	5	40	1500	0.6	8	YES	0-3	0-4.5	3.5	
	STK-616T-65MFB5	±65	5	30.8	1500	0.6	8	YES	0-3	0-4.5	3.5	
	STK-616T-10MFB3	±10	3.3	132	1500	0.6	8	YES	0-3	0-4.5	3.5	
	STK-616T-20											

◎ Coreless Solution

Type	Partnumber	Normal Current		Sensitivity	Frequency Bandwidth _3dB	Step Response time	Clearance	OCD Function	Trigger Delay	Trigger Holding	X_TrRange (%FS)	PRODUCT PACKAGE
		I <sub>pn</sub> (A)	V <sub>cc</sub> (V)									
STK-616TMF5	STK-616T-10MFB5	±10	5	200	1500	0.6	8	YES	0-3	0-4.5	3.5	SOIC16W Like 10.3 × 10.3 mm
	STK-616T-20MFB5	±20	5	100	1500	0.6	8	YES	0-3	0-4.5	3.5	
	STK-616T-40MFB5	±40	5	50	1500	0.6	8	YES	0-3	0-4.5	3.5	
	STK-616T-50MFB5	±50	5	40	1500	0.6	8	YES	0-3	0-4.5	3.5	
	STK-616T-65MFB5	±65	5	30.8	1500	0.6	8	YES	0-3	0-4.5	3.5	
	STK-616T-100MFB5	±100	5	20	1500	0.6	8	YES	0-3	0-4.5	3.5	
	STK-616T-133MFB5	±133	5	15	1500	0.6	8	YES	0-3	0-4.5	3.5	
	STK-616T-10MFB3	±10	3.3	132	1500	0.6	8	YES	0-3	0-4.5	3.5	
	STK-616T-20MFB3	±20	3.3	66	1500	0.6	8	YES	0-3	0-4.5	3.5	
	STK-616T-40MFB3	±40	3.3	33	1500	0.6	8	YES	0-3	0-4.5	3.5	
STK-616TMM	STK-616T-40MWB5	±40	5	50	600	0.2	8	YES	0-3	0-4.5	3.5	SOIC16W Like 10.3 × 10.3 mm
	STK-616T-65MWB5	±65	5	30.8	600	0.2	8	YES	0-3	0-4.5	3.5	
	STK-616T-20MWB3	±20	3.3	66	600	0.2	8	YES	0-3	0-4.5	3.5	
	STK-616T-40MWB3	±40	3.3	33	600	0.2	8	YES	0-3	0-4.5	3.5	
	STK-616T-65MWB3	±65	3.3	20.3	600	0.2	8	YES	0-3	0-4.5	3.5	
STK-616TMW	STK-616T-20MWB5	±20	5	100	600	0.2	8	YES	0-3	0-4.5	3.5	SOIC16W Like 10.3 × 10.3 mm
	STK-616T-40MWB5	±2A	5	1000	600	0.2	8	YES	0-3	0-4.5	3.5	
		±40	5	50	600	0.2	8	YES	0-3	0-4.5	3.5	
		±4A	5	500	600	0.2	8	YES	0-3	0-4.5	3.5	
	STK-616T-65MWB5	±65	5	30.8	600	0.2	8	YES	0-3	0-4.5	3.5	
		±6.5	5	308	600	0.2	8	YES	0-3	0-4.5	3.5	
	STK-616T-20MWB3	±20	3.3	66	600	0.2	8	YES	0-3	0-4.5	3.5	
±2		3.3	660	600	0.2	8	YES	0-3	0-4.5	3.5		
STK-616T-40MWB3	±40	3.3	33	600	0.2	8	YES	0-3	0-4.5	3.5		
	±4	3.3	330	600	0.2	8	YES	0-3	0-4.5	3.5		
STK-616TMWD	STK-616T-20MWDB5	±20	5	40	600	0.2	8	NO	N/A	N/A	3.5	SOIC16W Like 10.3 × 10.3 mm
	STK-616T-40MWDB5	±40	5	20	600	0.2	8	NO	N/A	N/A	3.5	
	STK-616T-65MWDB5	±65	5	13.3	600	0.2	8	NO	N/A	N/A	3.5	
	STK-616T-33MWDB3	±33	3.3	39.6	600	0.2	8	NO	N/A	N/A	3.5	
	STK-616T-20MWDB3	±20	3.3	66	600	0.2	8	NO	N/A	N/A	3.5	
	STK-616T-40MWDB3	±40	3.3	33	600	0.2	8	NO	N/A	N/A	3.5	
STK-616ZMF	STK-616Z-10MFU5	10	5	400	2000	0.05	4.2	NO	N/A	N/A	3.5	SOIC8 Like 4.9 × 6.0 mm
	STK-616Z-10MFB5	±10	5	200	2000	0.05	4.2	NO	N/A	N/A	3.5	
	STK-616Z-10MFB3	±10	3.3	132	2000	0.05	4.2	NO	N/A	N/A	3.5	
	STK-616Z-20MFB5	±20	5	100	2000	0.05	4.2	NO	N/A	N/A	3.5	
	STK-616Z-20MFB3	±20	3.3	66	2000	0.05	4.2	NO	N/A	N/A	3.5	
	STK-616Z-25MFB3	±25	3.3	52.8	2000	0.05	4.2	NO	N/A	N/A	3.5	
	STK-616Z-25MFB5	±25	5	80	2000	0.05	4.2	NO	N/A	N/A	3.5	
	STK-616Z-30MFB3	±30	3.3	44	2000	0.05	4.2	NO	N/A	N/A	3.5	
	STK-616Z-30MFB5	±30	5	66.7	2000	0.05	4.2	NO	N/A	N/A	3.5	
	STK-616Z-30MFU5	30	5	133.3	2000	0.05	4.2	NO	N/A	N/A	3.5	
	STK-616Z-30MFU3	30	3.3	88	2000	0.05	4.2	NO	N/A	N/A	3.5	
	STK-616Z-40MFB3	±40	3.3	33	2000	0.05	4.2	NO	N/A	N/A	3.5	
	STK-616Z-40MFB5	±40	5	50	2000	0.05	4.2	NO	N/A	N/A	3.5	
	STK-616Z-50MFB5	±50	5	40	2000	0.05	4.2	NO	N/A	N/A	3.5	
	STK-616Z-50MFU3	50	3.3	52.8	2000	0.05	4.2	NO	N/A	N/A	3.5	
	STK-616Z-50MFB3	±50	3.3	26.4	2000	0.05	4.2	NO	N/A	N/A	3.5	
	STK-616Z-50MFU5	50	5	88	2000	0.05	4.2	NO	N/A	N/A	3.5	
	STK-616Z-65MFB3	±65	3.3	30	2000	0.05	4.2	NO	N/A	N/A	3.5	
STK-616Z-65MFB5	±65	5	30	2000	0.05	4.2	NO	N/A	N/A	3.5		

◎ Coreless Solution



STK-616/AM



STK-616/AM3



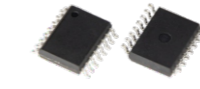
STK-616/AM5



STK-616/AM8



STK-616/BML



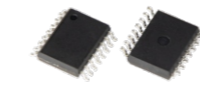
STK-616/DML



STK-616/HML



STK-616/KML



STK-616/TML



STK-616/TMF



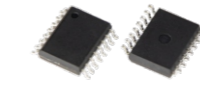
STK-616/TMF5



STK-616/TMM



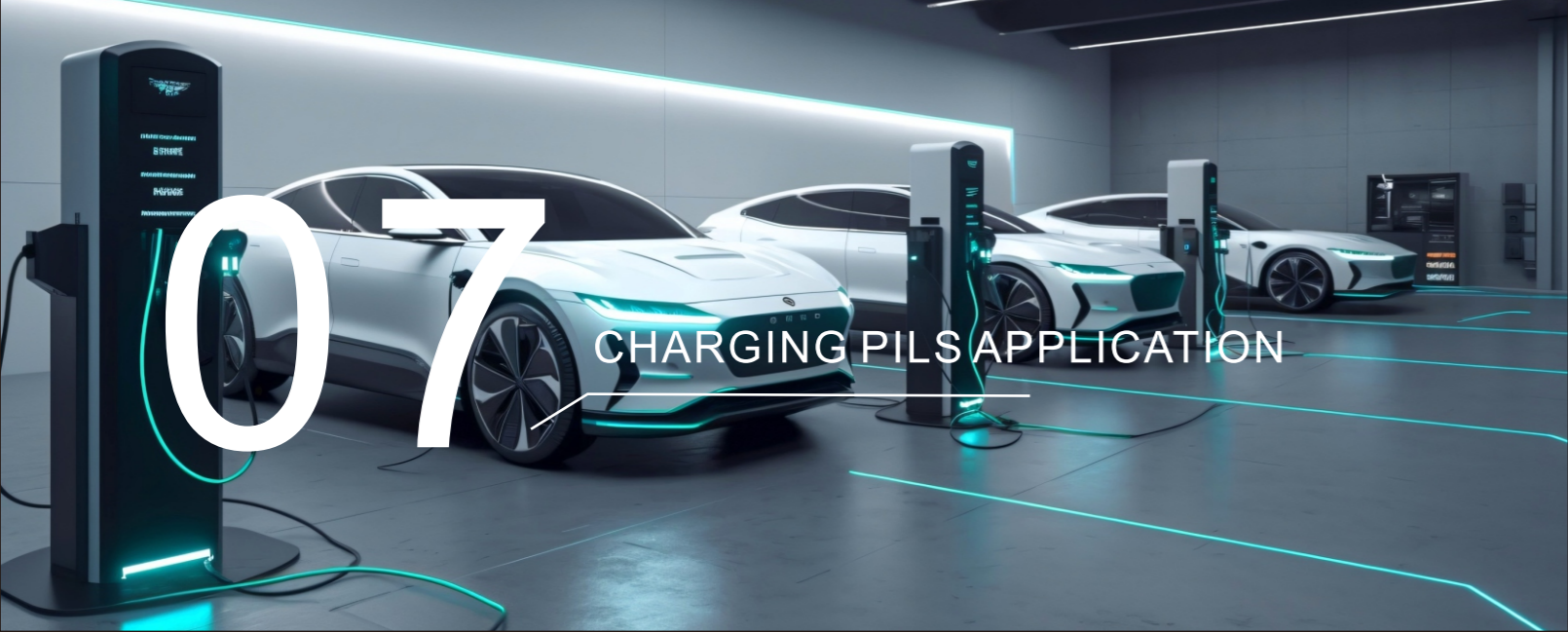
STK-616/TMW



STK-616/TMWD



STK-616ZMF



## Charging Piles

### Residual Current Detection Sensor





产品系列	产品图	原边连接方式	电流量数量	产品型号	测量范围(A)	剩余电流规格	标准
Series	Structure	Pri. Style	Number of Pri.	Item No.	Measuring range(A)	Nominal differential current	Standard
SFG-CPL/A		Primary conductor 带电流线	4	SFG-0.3CPL/A	0.3	6mA DC 30mA AC	IEC 62752 IEC62955
				SFG-0.3CPL/A-B	0.3	5mA AC	UL2231 CCID5
				SFG-0.3CPL/A-C	0.3	20mA AC	UL2231 CCID20
SFG-CPL/A2		Pass through opening 穿心 (开口)	-	SFG-0.3CPL/A2	0.3	6mA DC 30mA AC	IEC 62752 IEC62955
				SFG-0.3CPL/A2-A	0.3	6mA DC	IEC 62955
				SFG-0.3CPL/A2-C	0.3	20mA AC	UL2231 CCID20
SFG-CPL/A3		Pass through opening 穿心 (开口)	-	SFG-0.3CPL/A3	0.3	6mA DC 30mA AC	IEC 62752 IEC62955
				SFG-0.3CPL/A3-C	0.3	20mA AC	UL2231 CCID20
SFG-CPL/A4		Primary conductor 带电流线	2	SFG-0.3CPL/A4	0.3	6mA DC 30mA AC	IEC 62752 IEC62955
SFG-CPL/A4S		Primary conductor 带电流线	2	SFG-0.3CPL/A4S	0.3	6mA DC 30mA AC	IEC 62752 IEC62955
				SFG-0.3CPL/A4S-F	0.3	30mA AC	国标A型
SFG-CPL/A5		Pass through opening 穿心 (开口)	-	SFG-0.3CPL/A5	0.3	6mA DC 30mA AC	IEC 62752 IEC62955
				SFG-0.3CPL/A5-C	0.3	20mA AC	UL2231 CCID20
SFG-CPL/A6		Pass through opening 穿心 (开口)	-	SFG-0.3CPL/A6	0.3	6mA DC 30mA AC	IEC 62752 IEC62955



产品系列	产品图	原边连接方式	电流量数量	产品型号	测量范围(A)	剩余电流规格	标准
Series	Structure	Pri. Style	Number of Pri.	Item No.	Measuring range(A)	Nominal differential current	Standard
SFG-CPL/A7		Primary conductor 带电流线	4	SFG-0.3CPL/A7	0.3	6mA DC 30mA AC	IEC 62752 IEC62955
SFG-CPL/A8		Primary conductor 带电流线	2	SFG-0.3CPL/A8	0.3	6mA DC 30mA AC	IEC 62752 IEC62955
				SFG-0.3CPL/A8-C	0.3	20mA AC	UL2231 CCID20
SFG-CPL/A8S		Primary conductor 带电流线	2	SFG-0.3CPL/A8	0.3	6mA DC 30mA AC	IEC 62752 IEC62955
				SFG-0.3CPL/A8S-C	0.3	20mA AC	UL2231 CCID20
				SFG-0.3CPL/A8S-B	0.3	5mA AC	UL2231 CCID5
				SFG-0.3CPL/A8S-C	0.3	20mA AC	UL2231 CCID20
SFG-CPL/A9		Primary conductor 带电流线	2	SFG-0.3CPL/A9	0.3	6mA DC 30mA AC	IEC 62752 IEC62955
SFG-CPL/A10		Primary conductor 带电流线	2	SFG-0.3CPL/A10	0.3	6mA DC 30mA AC	IEC 62752 IEC62955
SFG-CPL/A11		Primary conductor 带电流线	2+单路AC	SFG-0.3CPL/A11	0.3	6mA DC 30mA AC	IEC 62752 IEC62955
SFG-CPL/A15		Pass through opening 穿心 (开口)	-	SFG-0.3CPL/A15	0.3	6mA DC 30mA AC	IEC 62752 IEC62955
SFG-CPL/B		Primary conductor 带电流线	4	SFG-0.3CPL/B	0.3	6mA DC 30mA AC	IEC 62752 IEC62955
				SFG-0.3CPL/B-A	0.3	6mA DC 20mA AC	IEC62752 UL2231 CCID20
				SFG-0.3CPL/B-B	0.3	5mA AC 20mA AC	UL2231 CCID5 UL2231 CCID20
SFG-CPL/B1		Pass through opening 穿心 (开口)	-	SFG-0.3CPL/B1	0.3	6mA DC 30mA AC	IEC 62752 IEC62955
				SFG-0.3CPL/B1-C	0.3	20mA AC 20mA AC	UL2231 CCID20
SFG-CPL/B2		Pass through opening 穿心 (开口)	-	SFG-0.3CPL/B2	0.3	6mA DC 30mA AC	IEC 62752 IEC62955
				SFG-0.3CPL/B2-C	0.3	6mA DC 30mA AC	UL2231 CCID20

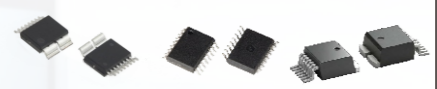

# Current Sensor for Charging Pile Power Module



## Current Sensors for Charging Piles

### Current Sensors for Charging Piles

Applied Current Sensor		Applied Current Sensor	
Technology	TMR-closed loop		Fluxgate
PN-01	STB-CAS		PN-01 STB-CAS/F
PN-02	STB-CAS/R		PN-02 STB-CAS/R/F
PN-03	STB-CAS/K		PN-03 STB-CAS/K/F
V <sub>cc</sub>	5.0	V	V <sub>cc</sub> 5.0 V
I <sub>pn</sub>	15~75	A	I <sub>pn</sub> 6~75 A
I <sub>pm</sub>	51~220	A	I <sub>pm</sub> 20~220 A
F <sub>band</sub>	400	kHz	F <sub>band</sub> 400 kHz
t <sub>r</sub>	0.3	μs	t <sub>r</sub> 0.3 μs
Acc.	1.1~3.0	%FS	Acc. 1.1~3.0 %FS

Applied Current Sensor		Applied Current Sensor	
PN-01	STK-600/M-MPFF&MPSF		PN-01 STK-600/F
PN-02	STK-600/M-PFF&PSF&PSS		PN-02
PN-03			PN-03
V <sub>cc</sub>	3.3 or 5.0	V	V <sub>cc</sub> 5.0 V
I <sub>pn</sub>	50, 100	A	I <sub>pn</sub> 50 A
I <sub>pm</sub>	50~400	A	I <sub>pm</sub> 200~400 A
F <sub>band</sub>	120	kHz	F <sub>band</sub> 1000 kHz
t <sub>r</sub>	4.6	μs	t <sub>r</sub> 0.4 μs
Acc.	3.5	%FS	Acc. 3.5 %FS

Applied Current Sensor		Applied Current Sensor	
PN-01	STK-616A, STK-616H		PN-01 STK-HD/P, STK-HD/P/G
PN-02	STK-616K, STK-616T		PN-02 STK-HD/K, STK-HD/K/G
PN-03	STK-626CMF2		PN-03
V <sub>cc</sub>	3.3 or 5.0	V	V <sub>cc</sub> 3.3 or 5.0 V
I <sub>pn</sub>	10~300	A	I <sub>pn</sub> 5.0~50 A
I <sub>pm</sub>	10~300	A	I <sub>pm</sub> 10~125 A
F <sub>band</sub>	500~1500	kHz	F <sub>band</sub> 600~1000 kHz
t <sub>r</sub>	0.2~0.9	μs	t <sub>r</sub> 1.0 μs
Acc.	3.0~3.5	%FS	Acc. 1.5~3.0 %FS

Applied Current Sensor		Applied Current Sensor	
PN-01	STK-PL/A	STK-PL/Z	PN-01 STK-HO
PN-02	STK-PL/M		PN-02
PN-03	STK-PL/AG		PN-03
V <sub>cc</sub>	5.0	V	V <sub>cc</sub> 5.0 V
I <sub>pn</sub>	10~180	A	I <sub>pn</sub> 60~150 A
I <sub>pm</sub>	25~450	A	I <sub>pm</sub> 150~375 A
F <sub>band</sub>	300~1000	kHz	F <sub>band</sub> 200 kHz
t <sub>r</sub>	0.2~1.5	μs	t <sub>r</sub> 2.0 μs
Acc.	2.0	%FS	Acc. 3.0 %FS

