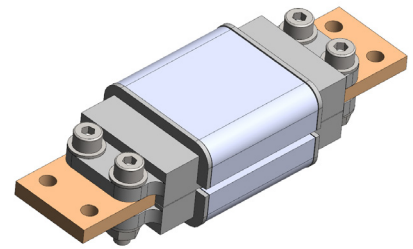


CMS EVO – Current Sensing

Current Sensor System for Standard Industrial Inverter

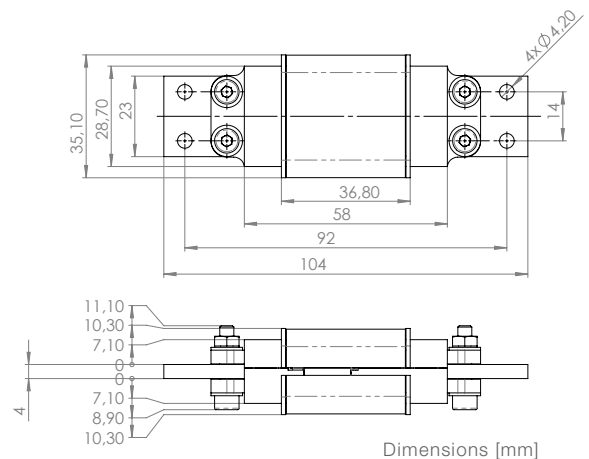
Introduction

- Highly accurate current sensor system based on the CFS1000
- Scalable system for currents between 200 A and 2000 A
- Fully calibrated system
- Plug & Play



Applications

- High current range applications ($I \geq 200$ A) like frequency inverters for
 - » Electrical machines and drives
 - » Machine tools
 - » Wind turbines
- Central inverter photovoltaic
- UPS systems



Features

- Galvanic isolation between primary and secondary circuit
- Large measuring range (3 times nominal primary current)
- Differential field measurement for high stray field immunity
- Overcurrent detection with tunable threshold
- Closed-loop principle for high linearity
- High bandwidth of 500 kHz (-3 dB)
- Fast response time (< 1 μ s)
- Optional:
 - » Shielding
 - » Digital signal output

Status

A-samples for qualification and optimization

Technical Data

| Parameter | Value | Unit |
|--|---------------|----------------------|
| Supply voltage | +5 | V |
| Nominal primary current (DC, AC, pulsed) | ± 500 | A |
| Measuring range | ± 1500 | A |
| Output current | 2 | mA |
| Response time | < 1 | μ s |
| Bandwidth (-3 dB) | 500 | kHz |
| Initial accuracy (T = 25 °C) | < 1 | % of nominal current |
| Operating temperature | -40 up to +90 | °C |
| Creepage and clearance distances | 3.1 | mm |
| Weight (including shielding) | 200 | g |



REACH-Compliant