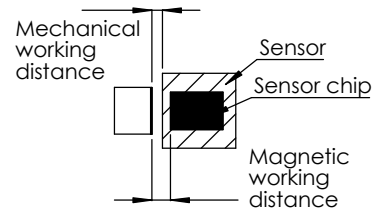
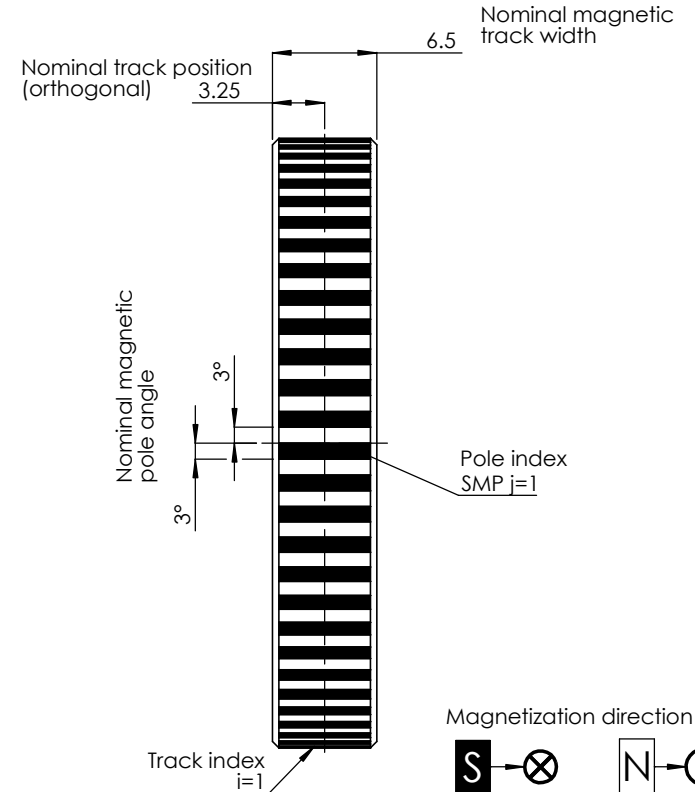
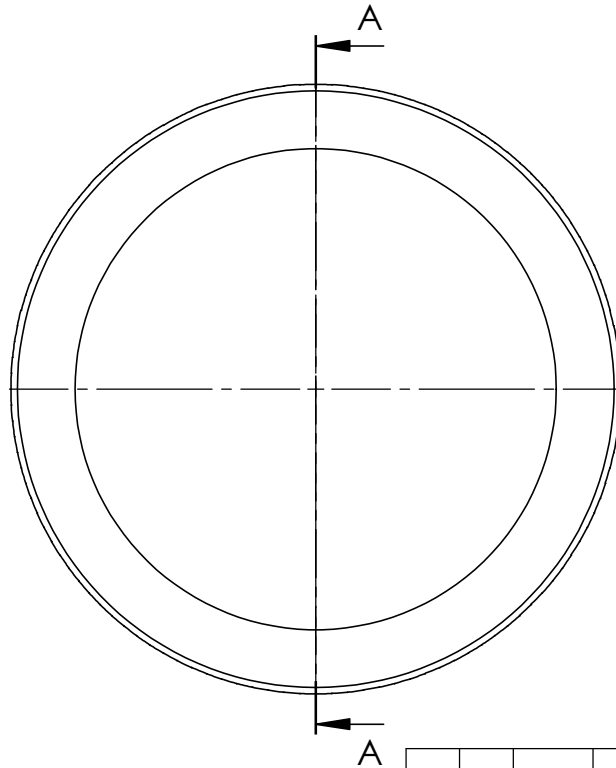
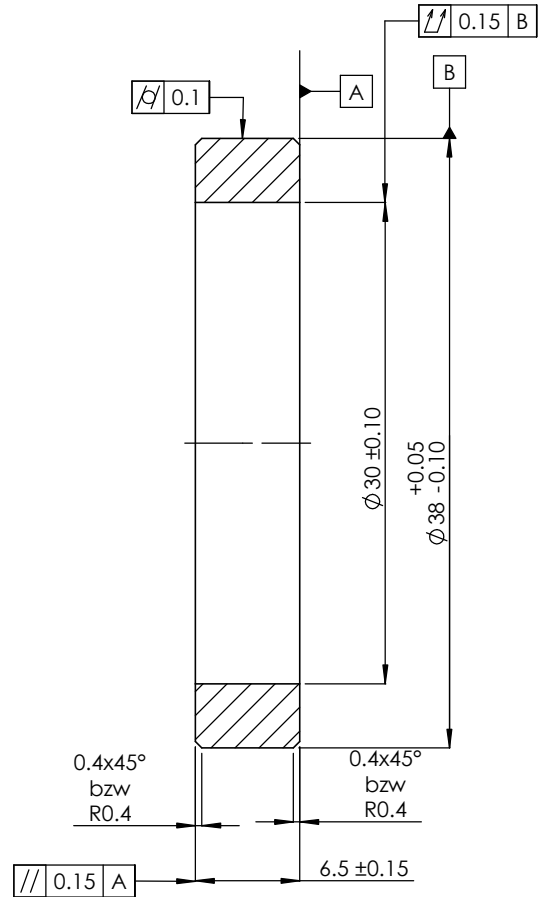
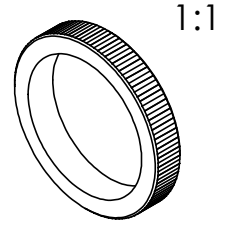


Track index	1	
Track type		-
Maximum permissible flux density		mT
Minimum permissible flux density		mT
Mechanical working distance		mm
Magnetic working distance		mm
Magnetization type	R0nl	-
Magnetization direction (parallel/normal)	normal	-
Pole number	120	-
Track width	6.5	mm
Maximum permissible pole location deviation		°
Maximum permissible pole length deviation		°

Track 1			
Pole (j)	Pole length	Pole location	Pole direction
	°	°	
1	3	0	S
2	3	3	N
3	3	6	S
...			
119	3	354	S
120	3	357	N

**Attention**

- Component is magnetized
- Exposure to external magnetic fields might influence or destroy magnetic encodings of the magnetic scale
- Protect the surface from mechanical damage
- Resistance to chemical substances is to be checked prior to exposure



Rev.				Name		Date		Change description		General surface quality		General workpiece edges	
										Ra 3.2		1-0.1 L-0.3	
General tolerances				Units		Comment		Material / Pre product					
ISO 2768-mH				mm				Sintered hard ferrite					
www.sensitec.com				Title		Date		Approved by		Date			
© 2021 Sensitec GmbH. All rights reserved				Hofmann H.J.		13.01.2023		Knöller H.		13.01.2023			
Confidential information of Sensitec GmbH				Part number				5108.6100.1					
Scale				Rev.		Doc. Type		Sheet					
3:1				00		ZE1		1/1					